

Torch

Marine grade, Industrial spec, Die hard.

Our LED bulkhead is composed of high-pressure LM6 Marine grade cast aluminum body and clear polycarbonate diffuser all wrapped up with an IP65 rating and able to withstand temperatures of 40 degrees ambient. Available in 4 different light distributions and standard with a replaceable 10kV surge protection and a high system efficacy of up to 128 lm/w.



Industrial

IP 65

Lights on.
Work done.

IP
65

Outdoor/Indoor



LM6 Marine
Grade Cast
Aluminum



SABS
Approved

energywise

Better light
through research.



Full metal jacket.

Our Industrial Torch Bulkhead is a fitting whose body has proved itself at cooling, protecting and housing luminaries in some of the most rugged environments in Africa.

It is made from LM6 Marine grade cast aluminum with a clear polycarbonate cover wrapped up with an IP65. Elon Musk has already ordered 1000 to hang up outside his Mars base. Jokes aside there isn't much this bulkhead can't easily brush off.

With an incredibly efficient heat dissipation design and a replaceable 10kV surge protection this Torch is simply stuck on the wall and forgotten about.

KEY FEATURES

LENSES

- 4 different optics.

FRONT COVER

- Impact rating IK08/5J

TEMPERATURE

- Ambient room temperature -25°C to +40°C.

MOUNTING OPTIONS

- Surface mounting brackets
- Pole mount
- Pole mount with swivel

Specifications

The perfect configuration for its job.



kV Protection:
Replaceable 10kV
Surge Protection

**IP
65**

Indoor/Outdoor



**Impact
Resistance:**
IK08/5J



Lenses:
Polycarbonate



Construction:
Aluminum &
Stainless Steel



**LM6 Marine
Grade Cast
Aluminum**

TORCH

Effective Lumen up to:

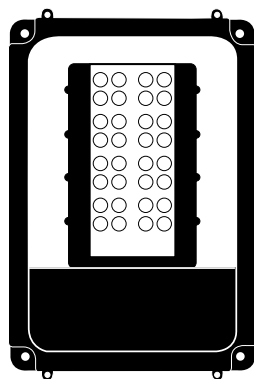
8560 lm

240V:
Effective Efficacy:

67W
128 lm/w

Max Ta:
L&B:

40°C
L80 B10
40°C 60K hrs



Fitting Size LxBxH:

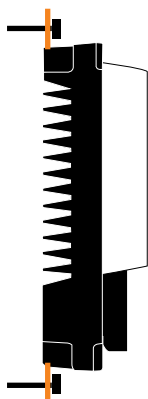
**400x
280x
115mm**

Installation

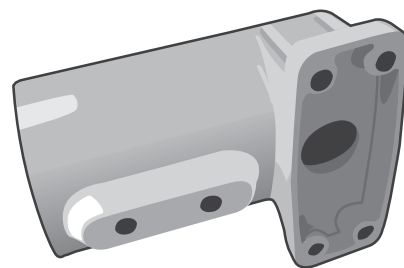
Easy to install, **Saving** you time & money

The Torch is a purpose designed LED bulkhead built for an industrial environment where dust is an explosive issue. Four easily attached mounting feet as standard. Alternatively a wall bracket is optional

**Mount - Surface
mounting brackets**
Solid, no fuss brackets.



**Mount - Pole
mounting brackets.**
Swivel bracket or pole
spriget on request.



Disclaimer:

Although every effort is made to ensure that at the time of publication, the technical details here within, are accurate, true and in line with the latest production specifications, we do reserve the right to change or upgrade any of the details without prior notice, agreement or warning, for any of our products or components. Our products and their performance are in constant evolution through:

- technology upgrades to improve energy efficiency and performance, increased safety and cost effectiveness
- to comply or conform to suppliers updates or according to new safety standards. The true nature of any upgrade is always to provide a better product, therefore, there will be no recourse for any complaints or claims of any nature regarding changes to specs.

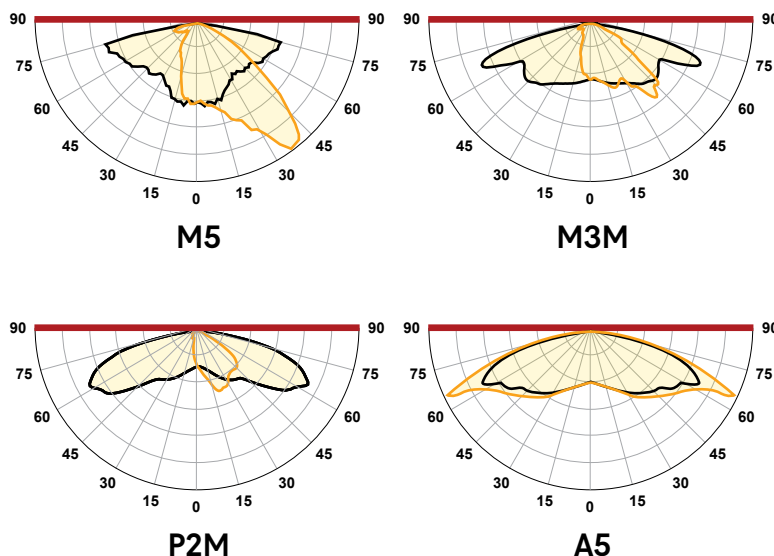
We are ISO 9001-2015 compliant and our assembly line follows IEC 60958 guidelines – our products are covered by a Product Liability Policy. Our LED products are covered by a 5 year warranty* *T&C's apply, please check with Head Office for further details.

Distribution Options

The light you need, where you want it.

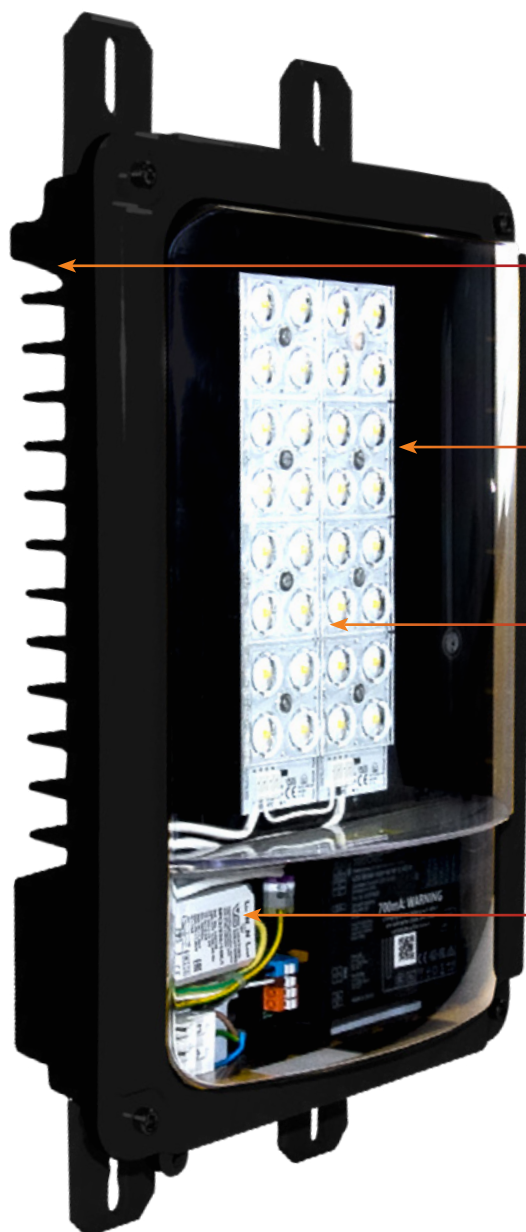
The development of high-quality optical lenses has changed the lighting game. Gone are the days of naked bulbs throwing out in a wide light spray covering everything from the ceiling above to the walls no one needs to see. With today's advancements in lens efficiency, we are able to put the light where you need it most providing you lux levels on both vertical and horizontal planes.

In so doing we can provide solutions for car parks or walkways or throwing wide beams across open spaces.



A Closer Look

Engineered to the highest standards.



Heat-sink

This industrial bulkhead is specifically designed for LEDs, it has an external heat sink allowing for effective heat dissipation outside of the fitting.

Cover

Polycarbonate cover offers great IK08 impact protection. The continuous rubber gasket allows for a water-resistant (IP65) assembly.

Lenses

For your choice of distribution options.

LEDs

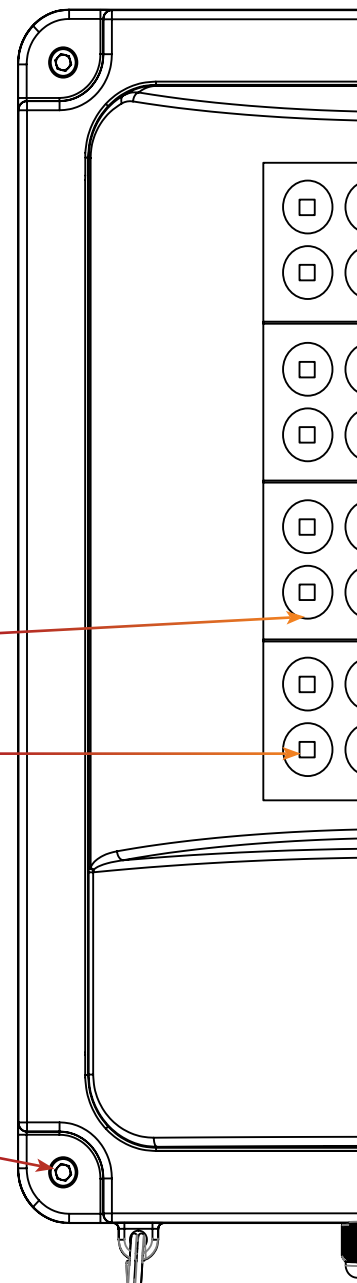
Sourced from the best component manufacturers in Europe to ensure maximum lifespan, quality and light spectrums.

Surge Protection

Replacable 10kV voltage

Finishings

All fasteners are Stainless Steel 316 rust free longevity.



Features

Standard across the
Torch bulkhead range.



Water resistant.



Recyclable



Polycarbonate lens and front cover.



Serviceable: All units are serviceable and all parts replaceable.



5600K Standard, 3000K, 4000K, 6500K on request.



Colour rendition index 75+, 80+ on request



Top Bin Chips <3 MacAdams



Earth connection and CLASS I insulation fixture.



Front cover impact rating IK08/5J.



Replacable voltage surge protection 10kV.



Aluminum alloy with stainless steel 316 fasteners.



Surface mount.



LM6 Marine Grade Cast Aluminum

Extras

Optional extras



IES files available.

Effective lumen output after warm up:

We follow the same practice as other professional manufacturers in providing Effective Performance Data (Lumens, Watts and L&B) that are inclusive of driver and LED thermal losses during the warm-up period. This can only be achieved by performing the Energy and Photometric Measurement after the LED, within the fitting, is left ON, until a stable and constant Lumen output is reached, ie. reaching a thermally stable condition within the LED assembly at a Ta of 35°C. Unfortunately it's not uncommon to find suppliers using incomplete data suggesting Efficacy Lumen value to be 10 to 20% higher than the True Effective value. This misrepresentation is achieved by using Raw LED photometric data that does not include any of the driver losses (generally 2-5 %) and any thermal adjustment losses (this can take 20-240 min & account for 7-15%) In some extreme cases Effective Lumen is completely misquoted and only the Raw value is mentioned with much higher values. In both these cases True Effective Lumen is misrepresented and unlawful.

5 year warranty:
Please visit
www.energywise.co.za



Designed and
Manufactured by

energywise

Better Light
Through Research.

sales@energywise.co.za | www.energywise.co.za

T: +27 31 764 2345 / +27 87 941 0012

Physical address: Unit 5 Edstan Business Park, 2 Ibhubesi Road, Riverhorse Valley, Durban, South Africa, 4017

Postal address: PO Box 1166, Kloof, South Africa, 3640



Other Energywise lighting options

Energywise specialises in LED luminaires for industrial, EX, commercial and horticultural applications.

INDUSTRIAL

Lights on

Bay XP

Factories, Warehouses, Cold rooms etc.

Standard
Height: 25m
IP: 65
Temp: 40°C

Bay XL

Factories, Warehouses, Supply rooms etc.

Standard
Height: 20m
IP: 40
Temp: 30°C

Bay XE

Factories, Warehouses, Supply rooms etc.

Standard
Height: 15m
IP: 20
Temp: 30°C

DUSTPROOF

Warehouses, Car parks, Corridors.

Standard
Height: 8m
IP: 66
Temp: 35°C

Torch Bulkhead

Heavy industrial areas.

Standard
Height: 10m
IP: 65
Temp: 30°C

RETROFIT

HIGHbay XF

Light industrial econo low bay.

Standard
Height: 10m
IP: 20
Temp: 30°C

LOWbay XF

Light industrial econo low bay, Task lighting.

Standard
Height: 10m
IP: 20
Temp: 30°C

LED eBay

Light industrial econo low bay, Task lighting.

Standard
Height: 10m
IP: 40
Temp: 35°C

Retrofit 44

Converting old HID tech to LED

Standard
Height: 8m
IP: 00
Temp: 30°C

Retrofit 22

Converting old HID bulkhead to LED

Standard
Height: 10m
IP: 00
Temp: 35°C

Bricklight

Recessed wall light

Standard
Height: 2m
IP: 00
Temp: 30°C

RETAIL & COMMERCIAL

LEDrail 1000

Shops, Production facilities, parking

Standard
Height: 10m
IP: 40
Temp: 30°C

LEDrail 2000

Shops, Sheds, Underground parking

Standard
Height: 10m
IP: 40
Temp: 30°C

LEDrail 4000

Retail, board rooms, department stores.

Standard
Height: 5m
IP: 40
Temp: 35°C

LEDrail 8000

Retail, board rooms, department stores.

Standard
Height: 5m
IP: 40
Temp: 35°C

LEDrail 4-100

All retail outlets, showrooms, offices etc

Standard
Height: 10m
IP: 40
Temp: 35°C

LEDRAIL 4-100 IP65

Bakeries, Industrial kitchens etc

Standard
Height: 10m
IP: 65
Temp: 35°C

LEDRAIL 4-100 GAP

Retail applications, Hardware stores etc

Standard
Height: 10m
IP: 40
Temp: 35°C

EX

EX Bay XP

Factories, Warehouses, Mills, Marine etc.

Standard
Height: 17m
IP: 65
Temp: 40°C

EX Flood

Factories, Warehouses, Mills, Marine etc.

Standard
Height: 10m
IP: 65
Temp: 40°C

EX DUSTPROOF PREMIUM

Warehouses, Car parks, Mills.

Standard
Height: 8m
IP: 65
Temp: 40°C

EX DUSTPROOF

Warehouses, Car parks, Corridors, Mills.

Standard
Height: 8m
IP: 65
Temp: 40°C

EX Pod

Factories, Mines, Marine etc.

Standard
Height: 5m
IP: 68
Temp: 40°C

EX Torch

Heavy industrial areas.

Standard
Height: 10m
IP: 65
Temp: 40°C

EARTH

EARTHbay

Horticulture, Open areas etc

Standard
Height: 2.5m
IP: 65
Temp: 35°C

EARTHplate

Horticulture, Rack/Under shelf etc

Standard
Height: 0.5m
IP: 65
Temp: 35°C

EARTHpod

Horticulture, Propagation, Vertical, Racks etc.

Standard
Height: 0.2m
IP: 65
Temp: 35°C

Job done

energywise

Better light
through research.