

RetroFit 44

There's good as new, and then there's better

Our LED retrofit kit for the industry such as the MAG 44 or B40 Bulkhead, featuring an integrated heat sink that allows you to retain your existing cabling and body whilst upgrading to LED technology. It comes standard with L80 B10 and up to 70 000 hrs lifespan as well as an impressive CR80+.

Now Available for flat glass bulkheads



5 year warranty:
When installed by authorised electrician. Please visit www.energywise.co.za

SPEC SHEET RetroFit 44

201

301

101

Raw Lumen:
Effective Lumen:

3444 lm
2770 lm

5166 lm
4155 lm

10,267 lm
8500 lm

Wattage:

21W

32W

58W

Raw Efficacy:
Effective Efficacy:

164 lm/w
132 lm/w

164 lm/w
132 lm/w

177 lm/w
147 lm/w

Max Ta:

30°C

30°C

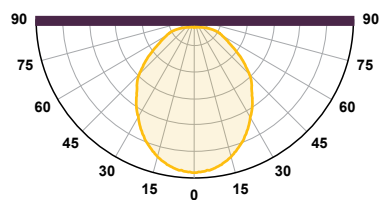
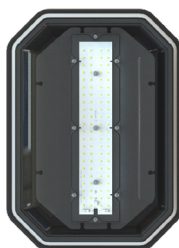
30°C

L&B:

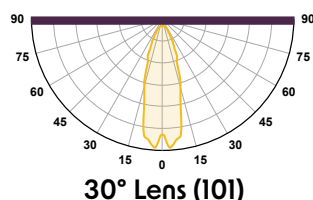
L80 B10
50 000 Hrs

L80 B10
50 000 Hrs

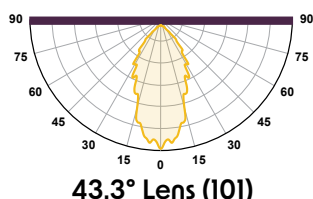
L80 B10
70 000 Hrs



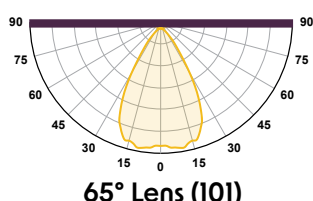
120° Diffused (201 & 301)



30° Lens (101)



43.3° Lens (101)



65° Lens (101)



kV Protection:
10kV surge protection



5000K standard
3000K, 4000K,
6500K available
CR>80 R9>13



Fully Serviceable



Fully Recyclable

KEY FEATURES

Available in three different lamp lumens/wattage/light distributions packages

- Each option has been designed and tested to ensure reliable performance at ambient temperatures up to 40°C
- High residual lumen (L&B factor) over the lifecycle of the luminaire
- High quality LED & Driver - compliant to international safety standards/specifications
- 10kV surge protection with electrical interruption.

*25°C is for Textbooks, Not Africa's Sun: All EW Lights are designed for the 30°C Reality. Minimum.



Designed and Manufactured by

energywise

Better Light
Through Research.

sales@energywise.co.za | www.energywise.co.za
T: +27 31 764 2345 / +27 87 941 0012

Physical address:
Unit 5 Edstan Business Park, 2 Ibhuesi Road,
Riverhorse Valley, Durban, South Africa, 4017.
Postal address: PO Box 1166, Kloof, South Africa, 3640

