

Bay XF

Get the job done, Glare-Free.

Engineered for industrial spaces where balanced illumination is key, this lighting solution delivers exceptional visibility without overwhelming intensity. By minimizing glare and optimizing light distribution, it creates a more comfortable and productive environment. Perfect for areas where softer, controlled lighting enhances safety and focus—ensuring the right illumination without unnecessary harshness.



Industrial

IP
20



Proudly manufactured in
South Africa using
European LED Technology



kV Protection:
Up to 4kV

**IP
20**

Indoor



Recyclable



**5 Year
Warranty**

energywise

Better light
through research.

High Lumen, Low-Glare

Specifically Built for industrial environments that need dependable performance without excessive brightness. The Bay XF offers exceptional balanced light distribution for a softer, more uniform light output, reducing glare while maintaining excellent illumination.

The reduced glare is softer on the eyes, providing enhanced comfort for workers in industrial environments where concentration is paramount, ensuring optimal visibility without the harshness of traditional high-intensity fixtures, promoting focus and productivity.

KEY FEATURES

LENSES

- 4 different optics for countless optic combinations

3 SIZE OPTIONS

- Bay XF 104, 204, 304

OPTICS

- Impact rating IK08/5J

MOUNTING OPTIONS

- Ceiling mount
- Suspended / Pendant



Optional:
Bluetooth, Wifi,
Dali & Bi Level.
Casambi App
featured above.



*25°C is for Textbooks, Not Africa's Sun:
All EW Lights are designed for the 30°C Reality. Minimum.

Specifications

Spec'd for every situation.

Our Bay XF can be manufactured to your desired specifications, see the options below.



kV Protection:
Up to 4kV



5000K standard
3000K, 4000K,
6500K available
CR>80 R9>I3



Indoor



Recyclable



L&B Life Rating
L80 B10
50 000 hrs



Low-Glare:
Minimal glare,
enhancing
visibility.



Suspended:
Chain or steel
cable.

Bay XF 104 1140 x 90mm

| | | | | |
|---------------------|-------------|-------------|-------------|-------------|
| Raw Lumen: | 4240 lm | 5840 lm | 7024 lm | 8200 lm |
| Effective Lumen: | 3814 lm | 5168 lm | 6138 lm | 7242 lm |
| Wattage: | 24W | 34W | 41W | 49W |
| Raw Efficacy: | 180 lm/w | 174 lm/w | 172 lm/w | 168 lm/w |
| Effective Efficacy: | 162 lm/w | 152 lm/w | 150 lm/w | 148 lm/w |
| Max ambient: | 30°C | 30°C | 30°C | 30°C |
| L&B: | L80 B10 | L80 B10 | L80 B10 | L80 B10 |
| Hrs: | 50 000 Hrs | 50 000 Hrs | 50 000 Hrs | 50 000 Hrs |

Bay XF 204 1140 x 140mm

| | | | | |
|---------------------|-------------|-------------|-------------|-------------|
| Raw Lumen: | 8480 lm | 11,680 lm | 14,048 lm | 16,400 lm |
| Effective Lumen: | 7628 lm | 10,336 lm | 12,276 lm | 14,484 lm |
| Wattage: | 48W | 68W | 82W | 98W |
| Raw Efficacy: | 180 lm/w | 174 lm/w | 172 lm/w | 168 lm/w |
| Effective Efficacy: | 162 lm/w | 154 lm/w | 150 lm/w | 148 lm/w |
| Max ambient: | 30°C | 30°C | 30°C | 30°C |
| L&B: | L80 B10 | L80 B10 | L80 B10 | L80 B10 |
| Hrs: | 50 000 Hrs | 50 000 Hrs | 50 000 Hrs | 50 000 Hrs |

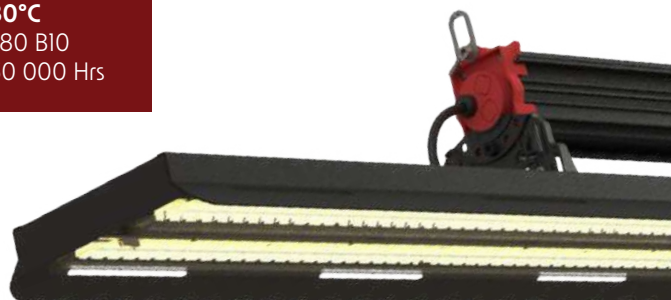
Bay XF 304 1140 x 195mm

| | | | | |
|---------------------|-------------|-------------|-------------|-------------|
| Raw Lumen: | 12,720 lm | 17,520 lm | 21,072 lm | 24,600 lm |
| Effective Lumen: | 11,442 lm | 15,504 lm | 18,414 lm | 21,726 lm |
| Wattage: | 72W | 102W | 123W | 147W |
| Raw Efficacy: | 180 lm/w | 174 lm/w | 172 lm/w | 168 lm/w |
| Effective Efficacy: | 162 lm/w | 154 lm/w | 150 lm/w | 148 lm/w |
| Max ambient: | 30°C | 30°C | 30°C | 30°C |
| L&B: | L80 B10 | L80 B10 | L80 B10 | L80 B10 |
| Hrs: | 50 000 Hrs | 50 000 Hrs | 50 000 Hrs | 50 000 Hrs |

Bay XF
Driver housed within
the fitting.



Bay XF
Remote piggy-back
driver.



Distribution Options

The light you need, where you want it.

The development of high-quality optical lenses has changed the lighting game. Gone are the days of naked bulbs throwing out in a wide light spray covering everything from the ceiling above to the walls no one needs to see. With today's advancements in lens efficiency, we are able to put the light where you need it most providing you lux levels on both vertical and horizontal planes.

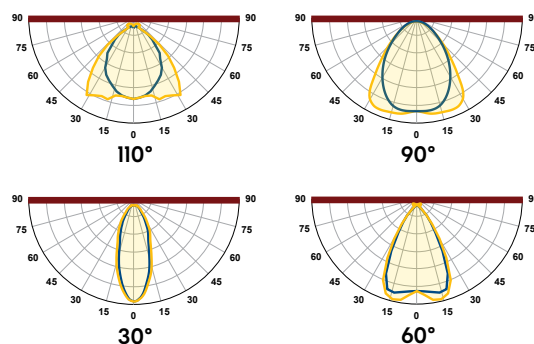
In so doing we can provide solutions for shelving or walkways, for punching deep through high-racks or throwing wide beams across open spaces. With these technologies, the only time you have dark spots is if you intentionally wanted to.

Disclaimer:

While every effort is made to ensure the accuracy of technical details at the time of publication, we reserve the right to modify or upgrade any product or component specifications without prior notice. Our products undergo continuous improvements in technology, energy efficiency, safety, and cost-effectiveness to meet evolving industry standards and supplier updates.

All upgrades are made to enhance product quality, and as such, no claims or complaints will be entertained regarding specification changes.

We are ISO 9001:2015 compliant, and our assembly line adheres to IEC 60958 guidelines. Our products are covered by a Product Liability Policy, and our LED products come with a 5-year warranty (T&Cs apply—please contact Head Office for details).



A Closer Look

Engineered to the highest standards.

Lenses

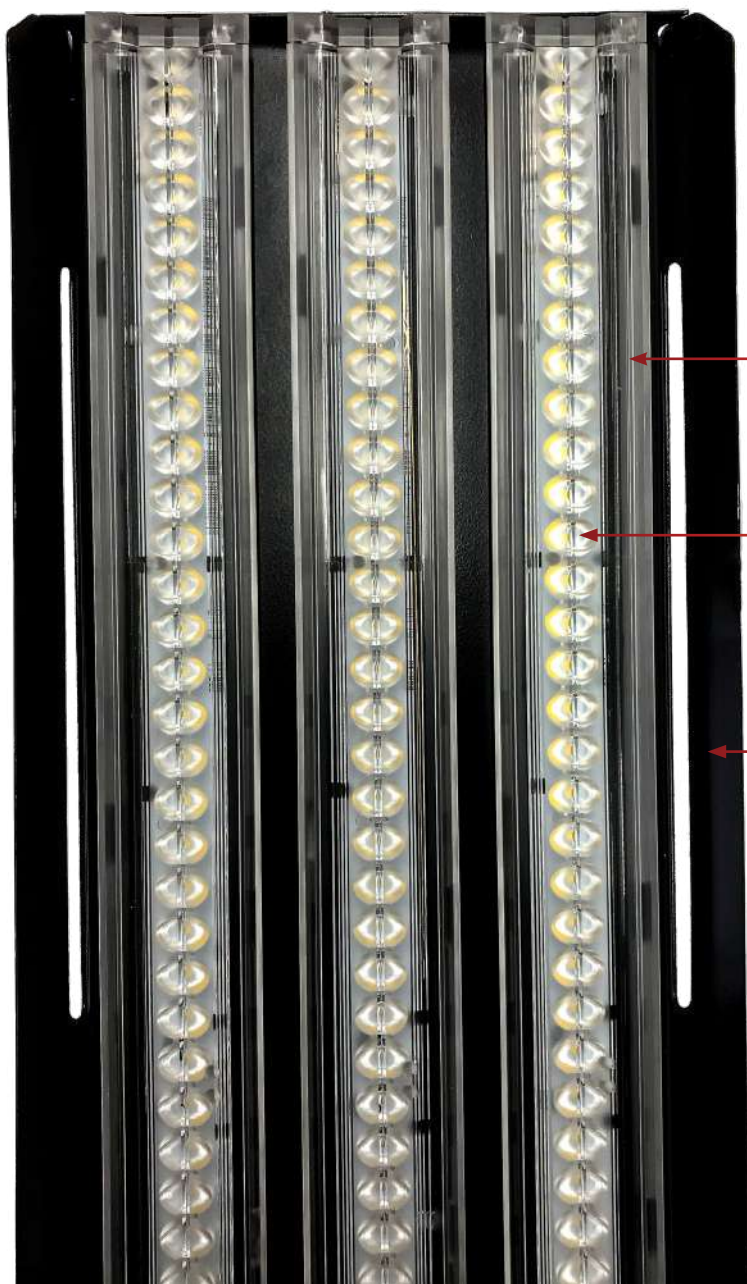
Polycarbonate lens offer great IK08 impact protection and efficient distribution control.

LEDs

Source from the best component manufactures in Europe to ensure maximum lifespan, quality and light spectrums.

Heat-sink

Aluminum heat-sink engineered to keep the LEDs comfortable up to an ambient of 30°C. This radical design is also easier to clean the fitting without compromising heat dissipation.



Features

Standard across the
BAY XF range.



Indoor.



Sustainably Recyclable.



Lenses.



Serviceable: All units are serviceable and all parts replaceable.



5600K Standard, 3000K, 4000K, 6500K on request.



Colour rendition index 80+



Top Bin Chips <3 MacAdams



L&B Life Rating: L80 B10, 50 000 hrs



Earth connection and CLASS I insulation fixture.



Optic impact rating IK08/5J.



Voltage surge protection up to 4Kv.



Suspended by chain or steel cable.
(not included)



5 year warranty:

Please visit
www.energywise.co.za

Extras

Optional Extras.



Casambi bluetooth technology.



All units can be fitted with Dali or bi-level driver.



Voltage surge protection.
Up to 10kV.



IES files available.



VOLTpro



Different colour options.

Effective Lumen Output After Warm-up

We adhere to industry best practices in providing accurate Effective Performance Data (Lumens, Watts, and L&B) that account for driver and LED thermal losses during the warm-up period.

To ensure precise measurements, we conduct Energy and Photometric Testing only after the LED within the fitting has been powered on long enough to reach a stable and constant lumen output—achieving thermal equilibrium at an ambient temperature (Ta) of 35°C.

Unfortunately, some suppliers misrepresent efficacy by inflating lumen values 10–20% above the true effective output. This is often done by using raw LED photometric data, which:

- Excludes driver losses (typically 2–5%)

- Ignores thermal adjustment losses, which can take 20–240 minutes and account for 7–15% reduction in output

Given these factors, the actual Effective Lumen Output is often lower than raw values suggest. In extreme cases, some suppliers report only raw LED values, completely disregarding real-world performance.

For transparency and accuracy, we ensure our data reflects true effective lumens, providing reliable performance metrics you can trust.

Designed and
Manufactured by

energywise

Better Light
Through Research.

sales@energywise.co.za | www.energywise.co.za | T: +27 31 764 2345

Physical address: Unit 5 Edstan Business Park, 2 Ibhubesi Road,
Riverhorse Valley, Durban, South Africa, 4017

Postal address: PO Box 1166, Kloof, South Africa, 3640



Energywise lighting options

Energywise specialises in LED luminaries for industrial, EX, commercial and horticultural applications.

INDUSTRIAL



Bay XP
Factories, Warehouses,
Cold rooms etc.

Standard
Height: 6-25m
IP: 65
Temp: 40/65°C



Bay XL
Factories, Warehouses,
Supply rooms etc.

Standard
Height: 3-20m
IP: 40
Temp: 30°C



Bay XE
Factories, Warehouses,
Supply rooms etc.

Standard
Height: 6-25m
IP: 20
Temp: 30°C



DUSTPROOF
Warehouses, Car
parks, Corridors.

Standard
Height: 2.5-8m
IP: 66
Temp: 35°C



**VANDAL-RESISTANT
DUSTPROOF** Car parks,
Corridors, Mills.

Standard
Height: 2.5-8m
IP: 66
Temp: 35°C



PUREBox Panel
Medical & laboratory,
Clean rooms etc.

Standard
Height: 3-5m
IP: 54
Temp: 35°C



Torch Bulkhead
Heavy industrial areas.

Standard
Height:
IP: 65
Temp: 30°C



Pod IP65
Tamperproof and
nearly unbreakable.

Standard
Height: 2-5m
IP: 65
Temp: 35°C



Bay XF
Get the job done,
Glare-Free.

Standard
Height: 2-10m
IP: 20
Temp: 30°C



Plate XP
Swiss army knife
of lighting.

Standard
Height: 6-25m
IP: 65
Temp: 35°C



TOBLO bay
Factories, Warehouses,
Supply rooms etc.

Standard
Height: 6-25m
IP: 40
Temp: 40/30°C



Bay XT
Distribution centers,
Warehouses etc.

Standard
Height: 3-20m
IP: 40
Temp: 35°C



Retrofit 44
Converting old HID
tech to LED

Standard
IP: 00
Temp: 30°C



Retrofit 22
Converting old HID
bulkhead to LED

Standard
IP: 00
Temp: 35°C

RETAIL & COMMERCIAL



LEDrail 1000
Shops, Production
facilities, parking

Standard
Height: 2.5-10m
IP: 40
Temp: 30°C



LEDrail 2000
Shops, Sheds,
Underground parking

Standard
Height: 2.5-10m
IP: 40
Temp: 30°C



LEDrail 4000
Retail, board rooms,
department stores.

Standard
Height: 2.5-6m
IP: 40
Temp: 35°C



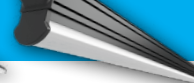
LEDrail 8000
Retail, board rooms,
department stores.

Standard
Height: 2.5-6m
IP: 40
Temp: 35°C



LEDrail 4-100
All retail outlets,
showrooms, offices etc

Standard
Height: 2.5-10m
IP: 40
Temp: 35°C



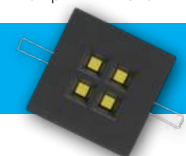
LEDrail 4LCO
Shops, Production
facilities, showrooms etc

Standard
Height: 2.5-10m
IP: 40
Temp: 35°C



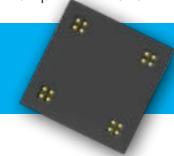
Linear 4-300
Glare free
precision lighting

Standard
Height: 2.5-10m
IP: 40
Temp: 35°C



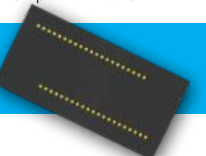
Downlighter
Offices, retail and
hospitality settings.

Standard
IP: 40
Temp: 30°C



Panel 595x595
Offices, healthcare,
educational facilities.

Standard
IP: 40
Temp: 30°C



Panel 1195x595
Offices, commercial,
educational settings.

Standard
IP: 40
Temp: 30°C



EX Bay XP
Factories, Warehouses,
Mills, Marine etc.

Standard
Height: 6-25m
IP: 65
Temp: 40°C



**EX DUSTPROOF
PREMIUM** Warehouses,
Car parks, Mills.

Standard
Height: 2.5-8m
IP: 65
Temp: 35°C



EX DUSTPROOF
Warehouses, Car
parks, Corridors, Mills.

Standard
Height: 2.5-8m
IP: 65
Temp: 35°C



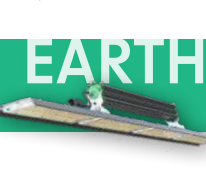
EX Pod
Factories, Mines,
Marine etc.

Standard
Height: 2-5m
IP: 68
Temp: 40°C



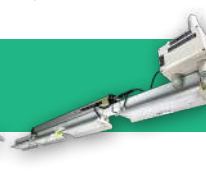
EX Torch
Heavy industrial
areas.

Standard
IP: 65
Temp: 40°C



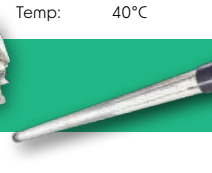
EARTHbay
Horticulture, Open
areas etc

Standard
From canopy: 0.5-2m
IP: 65
Temp: 35°C



EARTHplate
Horticulture, Rack/
Under shelf etc

Standard
From canopy: 0.4-2m
IP: 65
Temp: 35°C



EARTHpod
Horticulture,
Propagation, Racks etc.

Standard
From canopy: 0.2-1m
IP: 65
Temp: 35°C

EARTH

Lights on. Job done.

energywise

Better light
through research.