

# LEDrail 4100



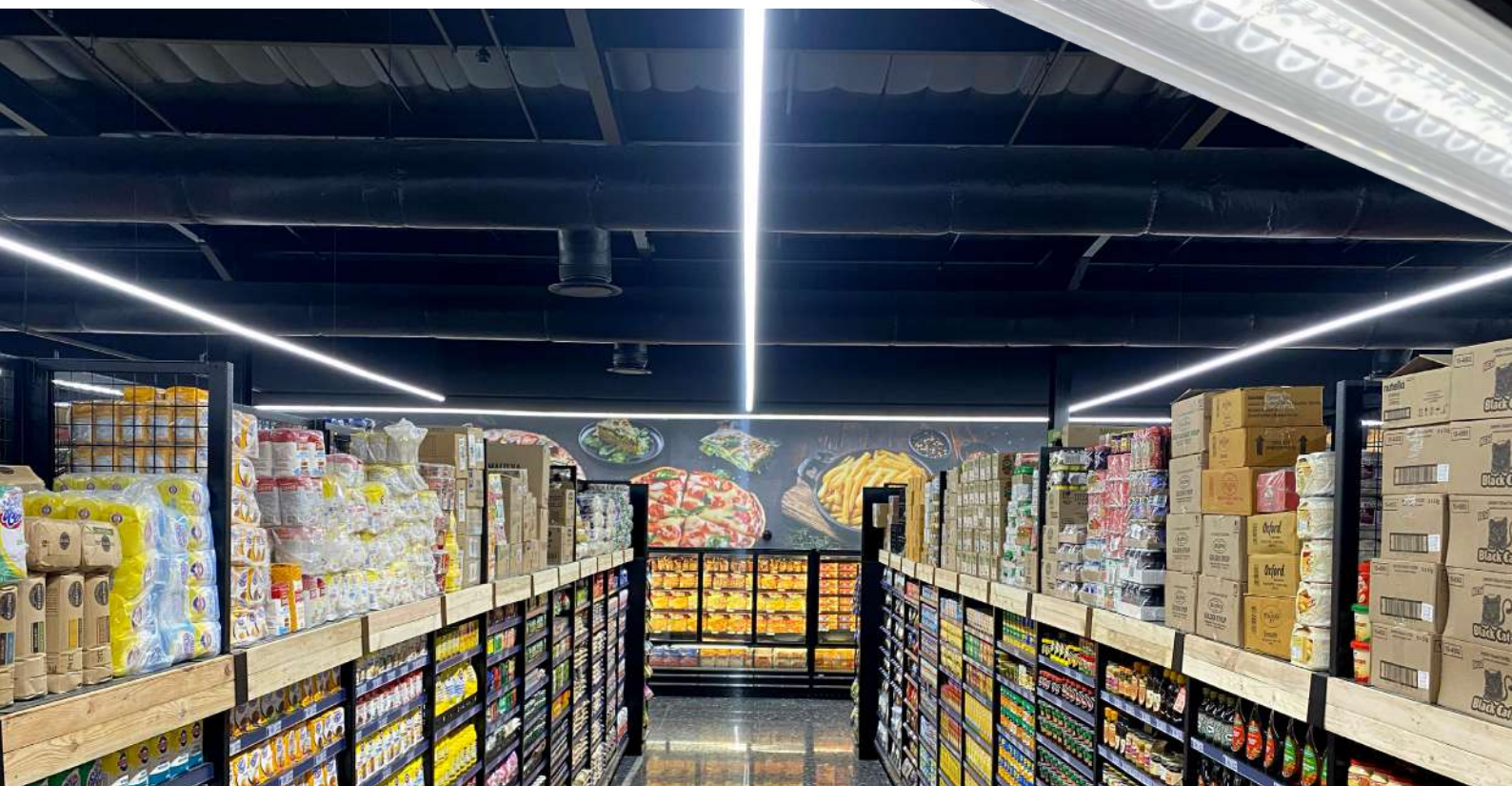
Retail

## The undisputed king of retail lighting.

Our flagship linear retail LED solution designed standard with 1/2kV surge protection upgradeable to 4kV or 10kV on request. Featuring eight lens options including retail symmetrical designed specifically for retail isles as well as the ability to upgrade to multi-wire circuit configurations and an almost tool-free installation. The 4100 is a pre-wired linkable system with plug & play connections with up to 3 circuits L&N



**5 year warranty:**  
7 year warranty  
available T&Cs apply.  
Please visit  
[www.energywise.co.za](http://www.energywise.co.za)



Proudly manufactured in  
**South Africa** using  
European LED Technology



**kV Protection:**  
1kV-2kV,  
4kV or 10kV on  
request



**Indoor**



**SABS**  
Approved



**5 Year**  
**Warranty**  
Extendable to  
7 year. T&Cs  
apply.

**energywise**

Better light  
through research.

# Over-engineered and overachieving by design



## A commercial flagship built to outperform in style.

The LEDrail 4100 combines a sleek modular design with powerful lumen output and precision optics, delivering both speed of installation and rugged durability.

Built with premium Italian and German components, it features standard 1/2Kv surge protection (upgradeable to 4Kv) with the option of a 10Kv replaceable protector for up to 25m of coverage.

More than just a light fitting, the 4100 is a high-grade luminaire engineered without compromise—an elegant yet robust solution for demanding commercial and retail environments.

### KEY FEATURES

#### OPTICS

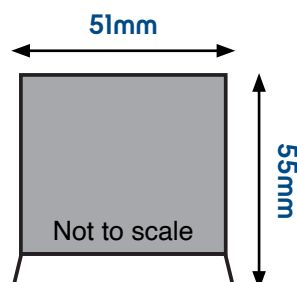
- 8 different acrylic optics for multiple lens combinations.

#### 5 SIZE OPTIONS

- LEDrail 4100 102
- LEDrail 4100 104
- LEDrail 4100 106
- LEDrail 4100 108
- LEDrail 4100 110

#### MOUNTING OPTIONS

- P2000 Compatible
- Pendant
- Floating
- Recessed



Size can vary by  $\pm 1\text{mm}$

Sizes are not including any caps or joints. Due to constant R&D, sizes can change without notice.



**Optional:**  
Bluetooth, Wifi,  
Dali & Bi Level.  
Casambi App  
featured above.





# OTHER CONFIGURATIONS

## LEDrail 4100 IP65

A wolf in sheep's clothing.

Designed to retain the aesthetic of the LEDrail 4100 systems but take the punch of IP65 environment the aptly named LEDrail 4100 IP65 features a resilient and sealed tubular fitting recessed into our 4100 trunking for those areas such as bakeries where the ability to take on a damp environment and keep on ticking is vital.



**kV Protection:**  
1kV-2kV,  
4kV or 10kV on  
request



**IP65  
Indoor**



**Acrylic  
Diffuser**



**P2000  
Compatible**



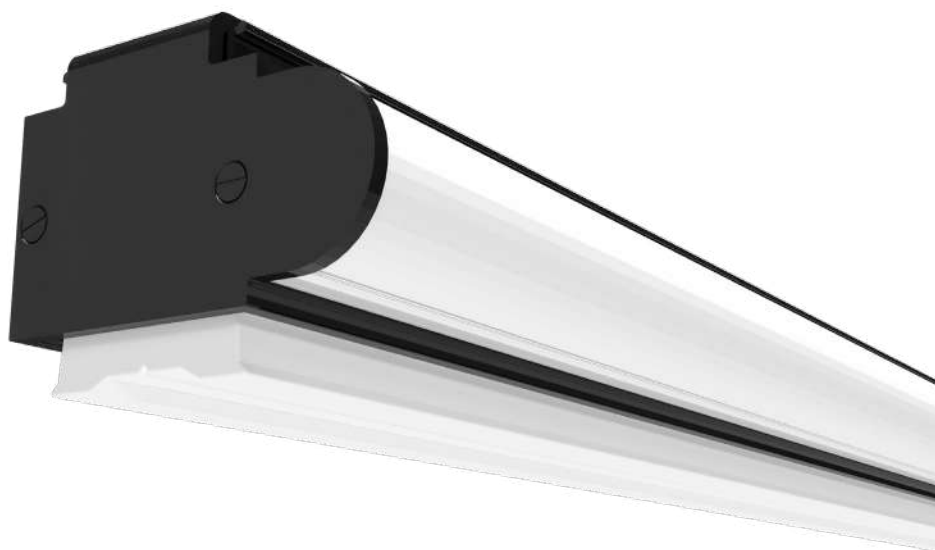
**Modular:**  
Expandable  
system



**Optional:**  
Bluetooth, Wifi,  
Dali & Bi Level

## LEDrail 4100 Wallwasher Wall and All

Our new Wall Washer Light retains all the technical excellence of our class-leading 4100 while adding a discreet side light for illuminating signage, ceilings, bulkheads, or features. This seamless integration enhances retail spaces with layered lighting, creating a more engaging shopping experience and elevating the overall aesthetic.



**kV Protection:**  
1kV-2kV,  
4kV or 10kV on  
request



**Recyclable**



**Acrylic  
Lens**



**P2000  
Compatible**



**Modular:**  
Expandable  
system



**Optional:**  
Bluetooth, Wifi,  
Dali & Bi Level



**Indoor**

# Specifications

## From high end retail to bakeries, boardrooms and dealerships.

Our premium LEDrail is also available as an IP65, Recessed and Gap fitting. Smaller sizes 102, 104 also available. Standard colour options are white, anodised and black. **F10** Drivers, **70K** hrs @ 35°C or **F3** Drivers, **100K** hrs @ 35°C.

### LEDrail 4100 options (1kv Drivers, 70K hrs @ 40°C / 4kv Drivers, 100K Hrs @ 40°C)

Name	Length	Effective Efficacy	40°C	40°C	40°C	40°C
<b>102</b>	571mm	160-134 lm/w	1886 lm/ <b>12w</b>	2557 lm/ <b>17w</b>	3001 lm/ <b>21w</b>	3957 lm/ <b>30w</b>
<b>104</b>	1131mm	162-148 lm/w	3814 lm/ <b>24w</b>	5168 lm/ <b>34w</b>	6138 lm/ <b>41w</b>	7242 lm/ <b>49w</b>
<b>106</b>	1691mm	162-148 lm/w	5721 lm/ <b>35w</b>	7752 lm/ <b>51w</b>	9207 lm/ <b>62w</b>	10,863 lm/ <b>74w</b>
<b>108</b>	2251mm	162-148 lm/w	7628 lm/ <b>47w</b>	10,336 lm/ <b>67w</b>	12,276 lm/ <b>82w</b>	14,484 lm/ <b>98w</b>
<b>110</b>	2811mm	162-148 lm/w	9535 lm/ <b>59w</b>	12,920 lm/ <b>84w</b>	15,345 lm/ <b>103w</b>	18,105 lm/ <b>123w</b>
			L90 B10 70 000 Hrs		L80 B10 70 000 Hrs	

### LEDrail 4100 IP65 options (1kv Drivers, 70K hrs @ 40°C / 4kv Drivers, 100K Hrs @ 40°)

Name	Length	Effective Efficacy	40°C	40°C	40°C
<b>102</b>	571mm	160-147 lm/w	1886 lm/ <b>12w</b>	2557 lm/ <b>17w</b>	3001 lm/ <b>21w</b>
<b>104</b>	1131mm	160-147 lm/w	3772 lm/ <b>24w</b>	5114 lm/ <b>34w</b>	6002 lm/ <b>41w</b>
<b>106</b>	1691mm	160-147 lm/w	5658 lm/ <b>35w</b>	7671 lm/ <b>51w</b>	9003 lm/ <b>62w</b>
<b>108</b>	2251mm	160-147 lm/w	7544 lm/ <b>47w</b>	10,228 lm/ <b>67w</b>	12,004 lm/ <b>82w</b>
<b>110</b>	2811mm	160-147 lm/w	9430 lm/ <b>59w</b>	12,785 lm/ <b>84w</b>	15,005 lm/ <b>103w</b>
			L90 B10 50 000 Hrs		L80 B10 50 000 Hrs

### LEDrail 4100 Wallwasher options (4kv Drivers, 100K hrs @ 40°C)

Name	Length	Effective Efficacy	40°C	40°C	40°C	40°C
<b>104</b>	1131mm	162-148 lm/w	7628 lm/ <b>24w</b>	10,336 lm/ <b>34w</b>	12,276 lm/ <b>41w</b>	14,484 lm/ <b>49w</b>
<b>106</b>	1691mm	162-148 lm/w	11,442 lm/ <b>35w</b>	15,504 lm/ <b>51w</b>	18,414 lm/ <b>62w</b>	21,726/ <b>74w</b>
<b>108</b>	2251mm	162-148 lm/w	15,256 lm/ <b>47w</b>	20,672 lm/ <b>67w</b>	24,552 lm/ <b>82w</b>	28,968 lm/ <b>98w</b>
<b>110</b>	2811mm	162-148 lm/w	19,070 lm/ <b>59w</b>	25,840 lm/ <b>84w</b>	30,690 lm/ <b>103w</b>	36,210 lm/ <b>123w</b>
			L90 B10 70 000 Hrs		L80 B10 70 000 Hrs	

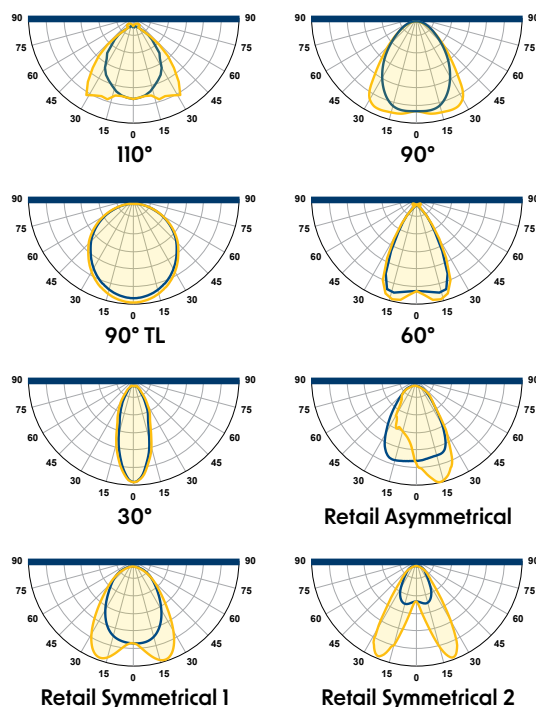
# Distribution Options

The light you need, where you want it.

## Retail lighting isn't just about brightness,

it's about precision. Our advanced optical lenses ensure that light is directed exactly where it's needed, enhancing product visibility while reducing unnecessary glare. With lens options of 30°, 60°, 90°, and 110°, as well as specialized symmetrical and asymmetrical retail lenses, we can sculpt the perfect lighting environment.

For shelving and displays, our vertical-throw asymmetrical lenses highlight products at eye level rather than wasting light on floors or ceilings. Whether you need **focused beams** to accentuate premium items, wide, even coverage for open spaces, or deep penetration through shelving, our lens technology ensures that customers see your products in the best possible light—literally. Because in retail, it's the goods that should shine, not the shoppers' shoes.



## A Closer Look

Engineered to the highest standards.

### Housing

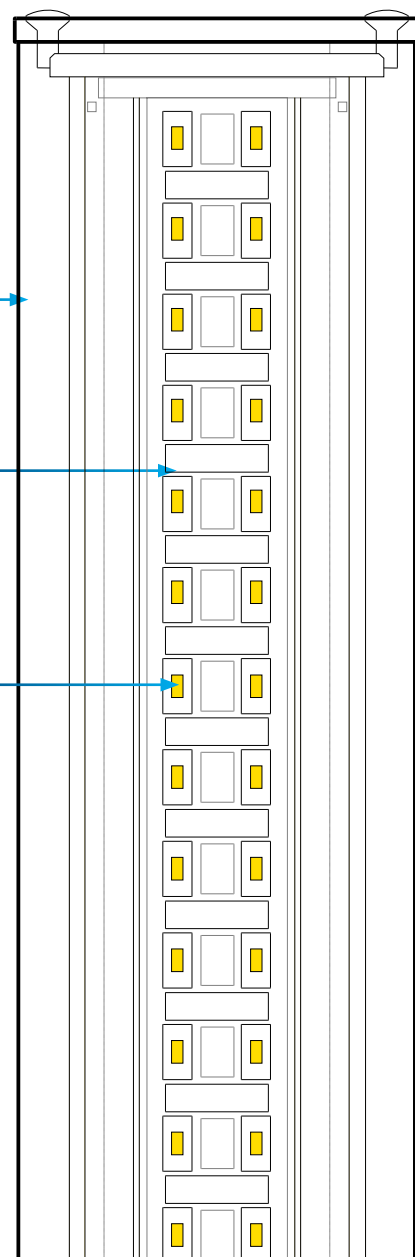
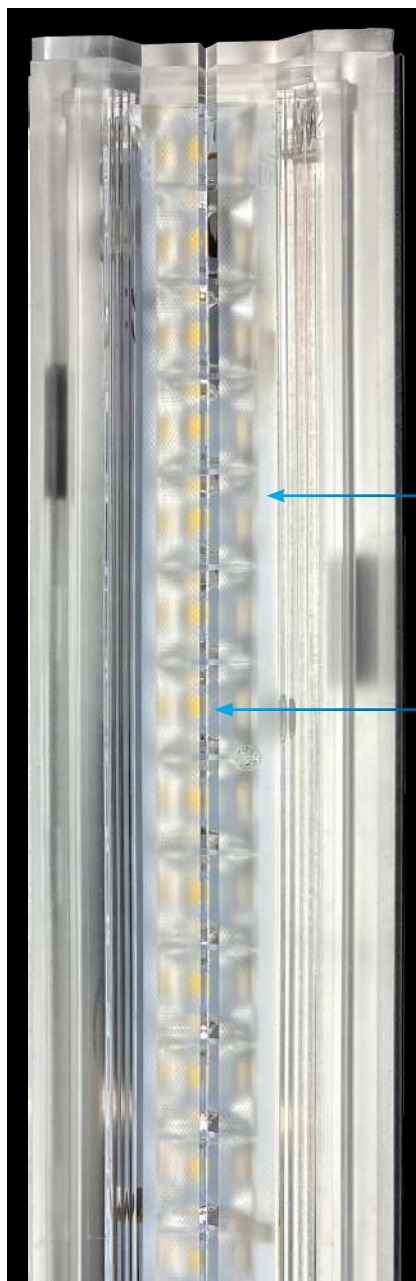
Excellent heat management for LED and Driver alike.

### Lenses

PMMA Optic available as 30°, 60°, 90°, 110°, Symmetrical narrow retail, Symmetrical wide retail, Asymmetrical.

### LEDs

Sourced from the best component manufactures in Europe to ensure maximum lifespan, quality and light spectrums.

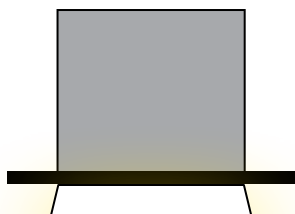


# Installation

## Easy to install, **Saving** you time & money

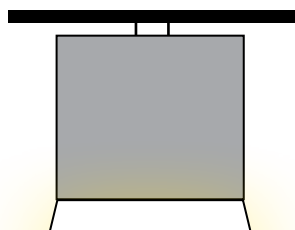
The LEDrail 4100 family are simple to install with a few different mounting options. Please specify your preference when ordering your LEDrail 4100

### IP40



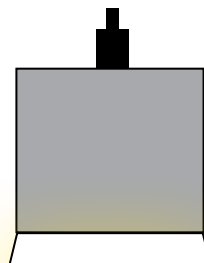
#### Recessed

Quick spring loaded attachment for a snug and secure fit.



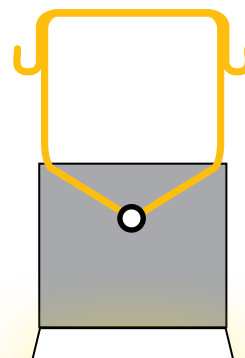
#### Floating Mount

A mount for areas where a ceiling mount isn't possible.



#### Suspended Mount

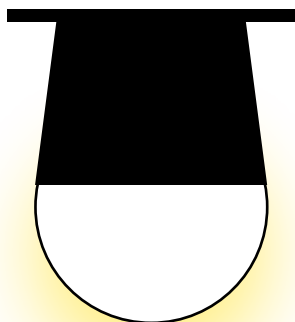
For hanging the fitting at your desired height.



#### P2000 Claw Mount

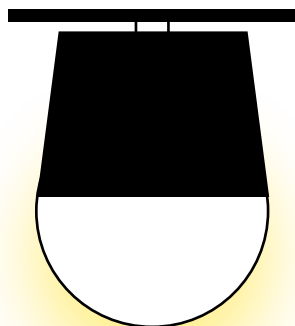
For quick and simple attachment to P2000 trunking.

### IP65



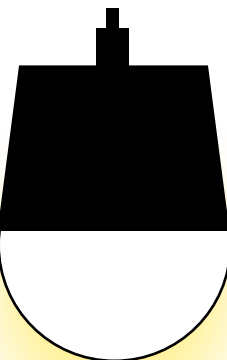
#### Ceiling Mount

A simple system to mount your new fittings directly to most ceilings



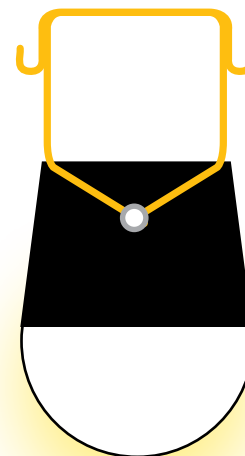
#### Floating Mount

A mount for areas where a ceiling mount isn't possible.



#### Suspended Mount

For hanging the fitting at your desired height.



#### P2000 Claw Mount

For quick and simple attachment to P2000 trunking.

#### Disclaimer:

While every effort is made to ensure the accuracy of technical details at the time of publication, we reserve the right to modify or upgrade any product or component specifications without prior notice. Our products undergo continuous improvements in technology, energy efficiency, safety, and cost-effectiveness to meet evolving industry standards and supplier updates.

All upgrades are made to enhance product quality, and as such, no claims or complaints will be entertained regarding specification changes.

We are ISO 9001:2015 compliant, and our assembly line adheres to IEC 60958 guidelines. Our products are covered by a Product Liability Policy, and our LED products come with a 5-year warranty (T&Cs apply—please contact Head Office for details).

#### Effective Lumen Output After Warm-up

We adhere to industry best practices in providing accurate Effective Performance Data (Lumens, Watts, and L&B) that account for driver and LED thermal losses during the warm-up period.

To ensure precise measurements, we conduct Energy and Photometric Testing only after the LED within the fitting has been powered on long enough to reach a stable and constant lumen output—achieving thermal equilibrium at an ambient temperature ( $T_a$ ) of 35°C.

Unfortunately, some suppliers misrepresent efficacy by inflating lumen values 10–20% above the true effective output. This is often done by using raw LED photometric data, which:

- Excludes driver losses (typically 2–5%)
- Ignores thermal adjustment losses, which can take 20–240 minutes and account for 7–15% reduction in output

Given these factors, the actual Effective Lumen Output is often lower than raw values suggest. In extreme cases, some suppliers report only raw LED values, completely disregarding real-world performance. For transparency and accuracy, we ensure our data reflects true effective lumens, providing reliable performance metrics you can trust.

# Features

Standard across the LEDrail 4100 range.



SABS Approved

**IP 40**

Indoor.



1/2kV surge protection.



Acrylic Lens.



Serviceable: All units are serviceable and all parts replaceable.



Colour temperature 3000, 4000, 5600 & 6500K



Colour rendition index 80+



Top Bin Chips <3 MacAdams



Modular.



Earth connection and CLASS I insulation fixture.



P2000 Trunking compatible



Ceiling / floating mount



Suspended by chain or steel cable. (not included)



L&B Life Rating: L80/90 B10 70 000 hrs

# Extras

Optional Extras.



Casambi bluetooth technology.



All units can be fitted with Dali or bi-level driver.



Driver upgrade to 4kV



10kV replaceable surge protection.



IES files available.



LEDrail 4100 IP65



VOLTpro



Different colour options.



**5 year warranty:**

7 year warranty available T&Cs apply.

Please visit

[www.energywise.co.za](http://www.energywise.co.za)

Designed and  
Manufactured by

**energywise**

Better Light  
Through Research.

[sales@energywise.co.za](mailto:sales@energywise.co.za) | [www.energywise.co.za](http://www.energywise.co.za)

T: +27 31 764 2345 / +27 87 941 0012

Physical address: Unit 5 Edstan Business Park, 2 Ibhumbesi Road, Riverhorse Valley, Durban, South Africa, 4017

Postal address: PO Box 1166, Kloof, South Africa, 3640



SABS  
APPROVED



MADE IN  
SOUTH AFRICA



# Energywise lighting options

Energywise specialises in LED luminaries for industrial, EX, commercial and horticultural applications.

## INDUSTRIAL

						
<b>Bay XP</b> Factories, Warehouses, Cold rooms etc.	<b>Bay XL</b> Factories, Warehouses, Supply rooms etc.	<b>Bay XE</b> Factories, Warehouses, Supply rooms etc.	<b>DUSTPROOF</b> Warehouses, Car parks, Corridors.	<b>VANDAL-RESISTANT DUSTPROOF</b> Car parks, Corridors, Mills.	<b>PUREBox Panel</b> Medical & laboratory, Clean rooms etc.	<b>Torch Bulkhead</b> Heavy industrial areas.
<b>Standard</b> Height: 6-25m IP: 65 Temp: 40/65°C	<b>Standard</b> Height: 3-20m IP: 40 Temp: 30°C	<b>Standard</b> Height: 6-25m IP: 20 Temp: 30°C	<b>Standard</b> Height: 2.5-8m IP: 66 Temp: 35°C	<b>Standard</b> Height: 2.5-8m IP: 66 Temp: 35°C	<b>Standard</b> Height: 3-5m IP: 54 Temp: 35°C	<b>Standard</b> Height: 6-25m IP: 65 Temp: 30°C





						
<b>Pod IP65</b> Tamperproof and nearly unbreakable.	<b>Bay XF</b> Get the job done, Glare-Free.	<b>Plate XP</b> Swiss army knife of lighting.	<b>TOBLO bay</b> Factories, Warehouses, Supply rooms etc.	<b>Bay XT</b> Distribution centers, Warehouses etc.	<b>Retrofit 44</b> Converting old HID tech to LED	<b>Retrofit 22</b> Converting old HID bulkhead to LED
<b>Standard</b> Height: 2-5m IP: 65 Temp: 35°C	<b>Standard</b> Height: 2-10m IP: 20 Temp: 30°C	<b>Standard</b> Height: 6-25m IP: 65 Temp: 35°C	<b>Standard</b> Height: 6-25m IP: 40 Temp: 40/30°C	<b>Standard</b> Height: 3-20m IP: 40 Temp: 35°C	<b>Standard</b> IP: 00 Temp: 30°C	<b>Standard</b> IP: 00 Temp: 35°C

## RETAIL & COMMERCIAL

						
<b>LEDrail 1000</b> Shops, Production facilities, parking	<b>LEDrail 2000</b> Shops, Sheds, Underground parking	<b>LEDrail 4000</b> Retail, board rooms, department stores.	<b>LEDrail 8000</b> Retail, board rooms, department stores.	<b>LEDrail 4-100</b> All retail outlets, showrooms, offices etc	<b>LEDrail 4LCO</b> Shops, Production facilities, showrooms etc	<b>Linear 4-300</b> Glare free precision lighting
<b>Standard</b> Height: 2.5-10m IP: 40 Temp: 30°C	<b>Standard</b> Height: 2.5-10m IP: 40 Temp: 30°C	<b>Standard</b> Height: 2.5-6m IP: 40 Temp: 35°C	<b>Standard</b> Height: 2.5-6m IP: 40 Temp: 35°C	<b>Standard</b> Height: 2.5-10m IP: 40 Temp: 35°C	<b>Standard</b> Height: 2.5-10m IP: 40 Temp: 35°C	<b>Standard</b> Height: 2.5-10m IP: 40 Temp: 35°C

						
<b>Downlighter</b> Offices, retail and hospitality settings.	<b>Panel 595x595</b> Offices, healthcare, educational facilities.	<b>Panel 1195x595</b> Offices, commercial, educational settings.	<b>EX Bay XP</b> Factories, Warehouses, Mills, Marine etc.	<b>EX DUSTPROOF PREMIUM</b> Warehouses, Car parks, Mills.	<b>EX DUSTPROOF</b> Warehouses, Car parks, Corridors, Mills.	<b>EX Pod</b> Factories, Mines, Marine etc.
<b>Standard</b> IP: 40 Temp: 30°C	<b>Standard</b> IP: 40 Temp: 30°C	<b>Standard</b> IP: 40 Temp: 30°C	<b>Standard</b> Height: 6-25m IP: 65 Temp: 40°C	<b>Standard</b> Height: 2.5-8m IP: 65 Temp: 35°C	<b>Standard</b> Height: 2.5-8m IP: 65 Temp: 35°C	<b>Standard</b> Height: 2-5m IP: 68 Temp: 40°C

## EARTH

			
<b>EX Torch</b> Heavy industrial areas.	<b>EARTHbay</b> Horticulture, Open areas etc	<b>EARTHplate</b> Horticulture, Rack/ Under shelf etc	<b>EARTHpod</b> Horticulture, Propagation, Racks etc.
<b>Standard</b> IP: 65 Temp: 40°C	<b>Standard</b> From canopy: 0.5-2m IP: 65 Temp: 35°C	<b>Standard</b> From canopy: 0.4-2m IP: 65 Temp: 35°C	<b>Standard</b> From canopy: 0.2-1m IP: 65 Temp: 35°C

Lights on. Job done.

**energywise**

Better light  
through research.