

X-Fit

Click on. Click off. No tools solution.

Our X-fit linear retail solution offers a magnetic or clip attachment for seamless integration with P2000 trunking, reducing installation time on site. The product leverages our established ledrail technology and boasts 8 lens options, premium European components, and is designed and developed by our South African R&D team, with a focus on African resilience. Thanks to our unique channel dressing technology, the X-Fit allows for complete and simple customization for new or existing P2000 trunking to compliment your design aesthetic (on request).



Easy to install.
Easier to maintain.



Proudly manufactured in
South Africa using
European LED Technology



kV Protection:
Up to 12kV surge
protection



Max



Pro



Core



Eazy

energywise

Better light
through research.

Retail

IP
40

Crossing the divide between lights & light.

Built to outperform in form & function.

The X-Fit offers a sleek modular design combined with high-powered lumen output and refined optics. It's also been designed to be installed with enough speed to make an F1 pit team blush.

Don't let its sleek lines fool you. This luminaire is as rugged as it is refined with up to 12Kv surge protection & comprised of the highest quality Italian and German components.

CHANNEL DRESSING

With our channel dressing technology new or existing P2000 trunking can be colour coded in a heartbeat to a slick & easy to install finished product.

KEY FEATURES

MODULAR

- Manufactured to seamlessly fit into any linear geometric shape

LENSES

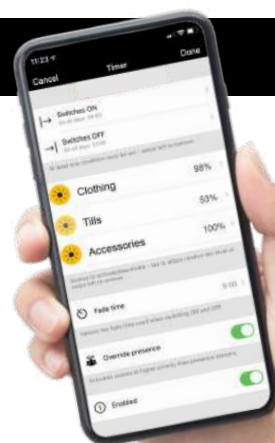
- 8 different acrylic optics for multiple lens combinations.

5 SIZE OPTIONS

- X-Fit 102 560 x 50mm
- X-Fit 104 1400 x 50mm
- X-Fit 106 1700 x 50mm
- X-Fit 108 2250 x 50mm
- X-Fit 110 2800 x 50mm

MOUNTING OPTIONS

- P2000 Compatible (P2000 not included)



Optional:
Bluetooth, Wifi,
Dali & Bi Level.
Casambi App
featured above.



*25°C is for Textbooks, Not Africa's Sun:
All EW Lights are designed for the 30°C Reality. Minimum.

A new range of performance for the X-FIT

To meet the diverse needs of different industries in terms of price, efficiency, and performance, we have developed four distinct performance ranges: **Max**, **Pro**, **Core**, and **Eazy**. Each range is carefully designed to address specific requirements, offering the right balance of features, energy efficiency, and cost-effectiveness.

Whether you're looking for high-performance solutions, reliable everyday lighting, or budget-friendly options, our four ranges provide tailored choices to ensure you get the right fit for your application, without compromise.

Max

Top-of-the-Line Performance for Demanding Applications

Suitable ta (ambient temperature): Up to 35°C. Higher ta on request.

LEDs: Ultra-high output, high CRI, top-tier efficacy

Drivers: Premium-grade (100Khr, F3)

Lifespan: 90,000Hrs L80B20 or 50,000Hrs L90 B10

Effective and stable system efficacy: up to 185 lm/w

Ideal For: Warehouses, factories, large retailers, 24/7, 365 operation

Warranty: 7 years extended warranty optional

Fully serviceable

Pro

Reliable Performance with Excellent Return on Energy

Suitable ta (ambient temperature): Up to 35°C. Higher ta on request.

LEDs: High-quality, reputable brand, high CRI, with excellent durability

Drivers: High-grade, ideal for retail and commercial use including F3 & F10 (100Khrs)

Lifespan: 75,000Hrs L80B20 or 35,000Hrs L90 B10

Effective and stable system efficacy: up to 165 lm/w

Ideal For: Supermarkets, commercial centers, retail franchises, 24/7, 365 operation

Warranty: 5~7 years warranty

Fully serviceable

Core

Cost Effective Durability with Reputable Components

Suitable ta (ambient temperature): up to 35°C. Higher ta on request.

LEDs: Economical but reputable brands

Drivers: Good quality, balanced between cost and performance F10 (up to 100Khrs)

Lifespan: 50,000Hrs L80B20 or 30,000Hrs L90 B10

Effective and stable system efficacy: up to 150 lm/w

Ideal For: General commercial and industrial use

Warranty: 5 years Standard

Fully serviceable

Eazy

Affordable and Reliable: Designed to Outperform Generic Imports

Suitable ta (ambient temperature): Up to 35°C. Higher ta on request.

LEDs: Same as Core (reputable source)

Drivers: ECONO range - economic but from trusted suppliers F10 (up to 100Khrs)

Lifespan: 50,000Hrs L70B20 or 25,000Hrs L90 B10

Effective system efficacy: up to 150 lm/w but smaller lumen package

Ideal For: Budget-conscious projects, retrofits, light-use areas

Warranty: 5 years Industry-standard, fully backed, ideal for 24/7 365 operation

Key Advantage: Engineered to exceed the performance of most generic imports, traceable quality Engineered for affordability.

Fully serviceable

Specifications

Max

Above industry standard

	102 560mm	104 1120mm	106 1700mm	108 2250mm	110 2800mm
Raw Lumen up to:	2700 - 4379 lm	5400 - 8758 lm	8100 - 13,137 lm	10,800 - 17,516 lm	13,500 - 21,895 lm
Effective Lumen up to:	2679 - 4284 lm	5358 - 8568 lm	8037 - 12,852 lm	10,716 - 17,136 lm	13,395 - 21,420 lm
Wattage:	15W - 26W	30W - 53W	45W - 79W	60W - 105W	59W - 148W
Raw Efficacy up to:	181 - 167 lm/w	181 - 167 lm/w	181 - 167 lm/w	181 - 167 lm/w	180 - 169 lm/w
Effective Efficacy up to:	180 - 163 lm/w	180 - 163 lm/w	180 - 163 lm/w	180 - 163 lm/w	164 - 143 lm/w

Pro

For most professional requirements

	102	104	106	108	110
Raw Lumen up to:	2120 - 3512 lm	4240 - 7024 lm	6360 - 8760 lm	8480 - 14,048 lm	10,600 - 17,560 lm
Effective Lumen up to:	1886 - 3001 lm	3814 - 6138 lm	5721 - 7752 lm	7628 - 12,276 lm	9535 - 15,345 lm
Wattage:	12W - 21W	24W - 41W	30W - 51W	47W - 82W	59W - 103W
Raw Efficacy up to:	180 - 172 lm/w	180 - 172 lm/w	180 - 174 lm/w	180 - 172 lm/w	180 - 172 lm/w
Effective Efficacy up to:	160 - 147 lm/w	162 - 150 lm/w	191 - 151 lm/w	162 - 150 lm/w	162 - 150 lm/w

Core

A balanced approach between price and quality

	102	104	106	108	110
Raw Lumen up to:	NOT AVAILABLE	4124 - 6712 lm	NOT AVAILABLE	8248 - 13,424 lm	10,310 - 16,780 lm
Effective Lumen up to:		3504 - 5704 lm		7008 - 11,408 lm	8760 - 14,260 lm
Wattage:	NOT AVAILABLE	26W - 43W		52W - 86W	64W - 107W
Raw Efficacy up to:		161 - 158 lm/w		322 - 316 lm/w	161 - 158 lm/w
Effective Efficacy up to:		137 - 134 lm/w		135 - 133 lm/w	137 - 134 lm/w

Eazy

A price driven solution with all the essential

	102	104	106	108	110
Raw Lumen up to:	2142 - 3362 lm	4284 - 6724 lm	6426 - 10,086 lm	8568 - 13,448 lm	10,710 - 16,810 lm
Effective Lumen up to:	1668 - 2630 lm	3336 - 5260 lm	5004 - 7890 lm	6672 - 10,520 lm	8340 - 13,150 lm
Wattage:	11W - 19W	21W - 37W	32W - 56W	43W - 74W	54W - 93W
Raw Efficacy up to:	200 - 183 lm/w	200 - 183 lm/w	200 - 183 lm/w	200 - 183 lm/w	200 - 183 lm/w
Effective Efficacy up to:	156 - 143 lm/w	156 - 143 lm/w	156 - 143 lm/w	156 - 143 lm/w	156 - 143 lm/w

Ease of Installation, No tools required, facing up or facing down.

Designed for easy maintenance with a versatile mounting system
Choose between magnetic attachment or clip-on installation.

The clip system uses durable stainless-steel clips,
while the magnetic version secures effortlessly with strong magnets.



CHANNEL DRESSING

FOR P2000 FACING UP

ALSO AVAILABLE IN WHITE

Channel Dressing is an innovative solution that enhances the appearance of P2000 trunking, transforming it into a sleek installation without needing painting or removal. It is easy to install on-site with minimal tools, requiring only a good eye, a step ladder, and scissors. In addition to its aesthetic benefits, it includes three dedicated cable channels for managing additional wiring, ensuring ample space regardless of the trunking's orientation. Designed to complement X-fit and Highlight light fittings, Channel Dressing combines design, practicality, and innovation to upgrade any space effortlessly.



Use Channel Dressing to cover old P2000.



Open the dressing and place over the P2000.



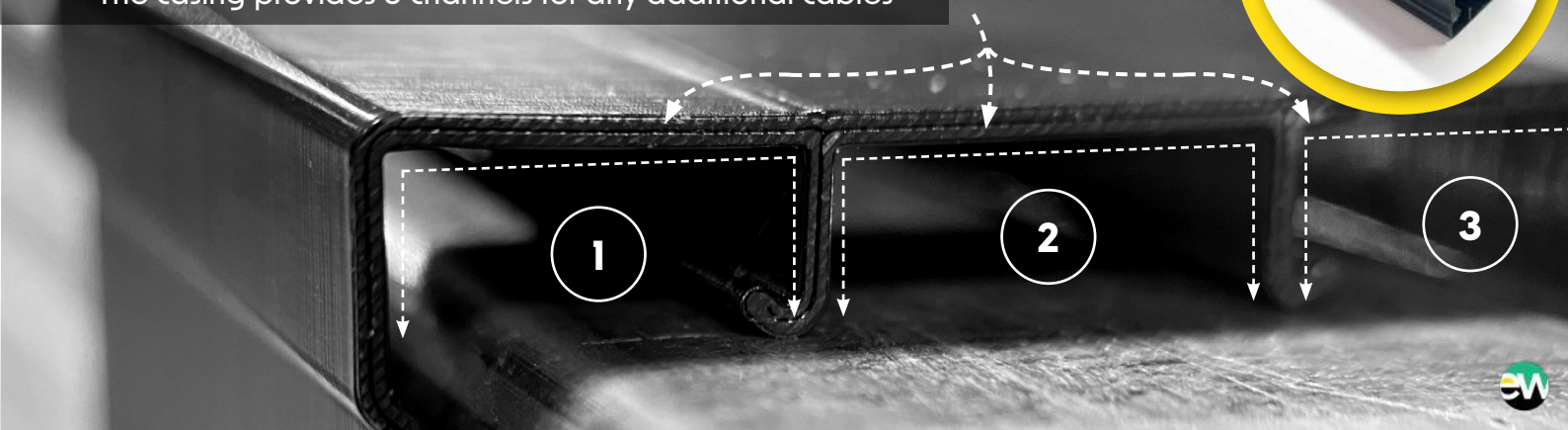
The dressing neatly conceals all cluttered cables.



Adjust the dressing to the ideal placement.

Channel dressing can be applied on both sides of the trunking to achieve a full cover-up. This ensures that the trunking is completely covered on all sides.

The casing provides 3 channels for any additional cables

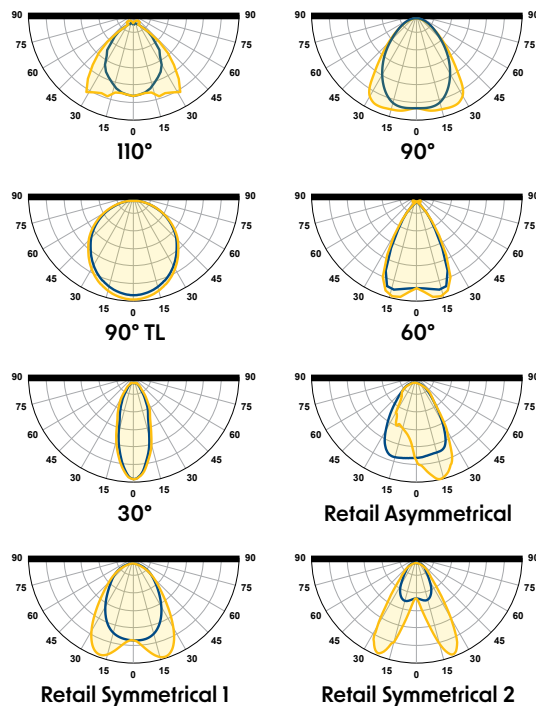


Distribution Options

The light you need, where you want it.

The development of high-quality optical lenses has changed the lighting game. Gone are the days of naked bulbs throwing out in a wide light spray covering everything from the ceiling above to the walls no one needs to see. With today's advancements in lens efficiency, we are able to put the light where you need it most providing you lux levels on both vertical and horizontal planes.

In so doing we can provide solutions for shelving or walkways, for punching deep through high-racks or throwing wide beams across open spaces. With these technologies, the only time you have dark spots is if you intentionally wanted to.



A Closer Look

Engineered to the highest standards.

Lenses

PMMA Optic available as 30°, 60°, 90°, 110°, 90 TL, Symmetrical narrow retail, Symmetrical wide retail, Asymmetrical.

LEDs

Sourced from the best component manufactures in Europe to ensure maximum lifespan, quality and light spectrums.

P2000 trunking

Channel dressing covering the P2000

Driver casing covering the driver

1

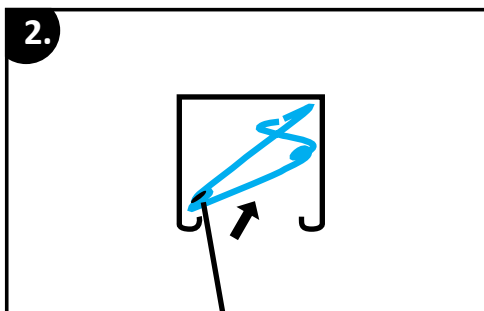
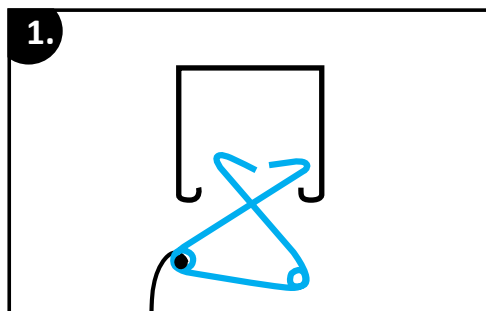
2

3



Installation

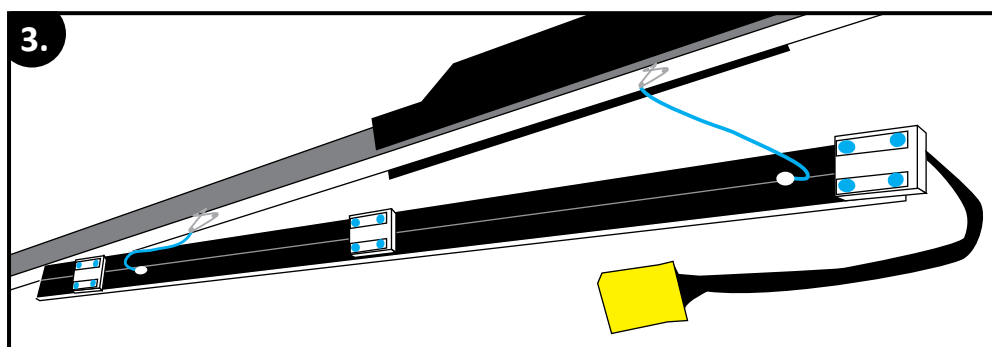
Easy to install, Saving you time & money



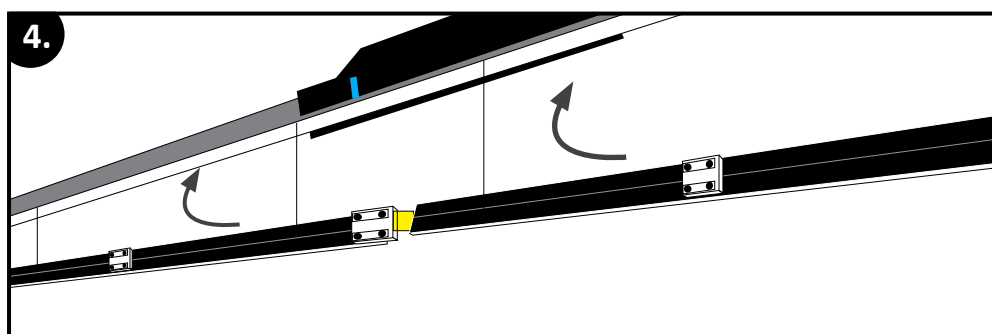
1. X-FIT INSTALL AID SPRING

The safety spring is pushed into the P2000 to secure it.

2. Place the open end into the channel. Using two thumbs push the spring until it clicks in.



3. The install aid now holds the X-FIT safely for you to connect X-FIT rails together (see pic 4.) And using the magnets on the back of the rail connect it snugly to the P2000 (not included).



4. Connect the X-FIT rails together with the yellow connectors at the end of the rails. Then attach the rails to the P2000 using the magnets.

The Driver housing has a slot on the side to conceal the cables that take power down to the lights.

Disclaimer:

While every effort is made to ensure the accuracy of technical details at the time of publication, we reserve the right to modify or upgrade any product or component specifications without prior notice. Our products undergo continuous improvements in technology, energy efficiency, safety, and cost-effectiveness to meet evolving industry standards and supplier updates.

All upgrades are made to enhance product quality, and as such, no claims or complaints will be entertained regarding specification changes.

We are ISO 9001:2015 compliant, and our assembly line adheres to IEC 60958 guidelines. Our products are covered by a Product Liability Policy, and our LED products come with a 5-year warranty (T&Cs apply—please contact Head Office for details).

Effective Lumen Output After Warm-up

We adhere to industry best practices in providing accurate Effective Performance Data (Lumens, Watts, and L&B) that account for driver and LED thermal losses during the warm-up period.

To ensure precise measurements, we conduct Energy and Photometric Testing only after the LED within the fitting has been powered on long enough to reach a stable and constant lumen output—achieving thermal equilibrium at an ambient temperature (T_a) of 35°C.

Unfortunately, some suppliers misrepresent efficacy by inflating lumen values 10–20% above the true effective output. This is often done by using raw LED photometric data, which:

- Excludes driver losses (typically 2–5%)
- Ignores thermal adjustment losses, which can take 20–240 minutes and account for 7–15% reduction in output

Given these factors, the actual Effective Lumen Output is often lower than raw values suggest. In extreme cases, some suppliers report only raw LED values, completely disregarding real-world performance. For transparency and accuracy, we ensure our data reflects true effective lumens, providing reliable performance metrics you can trust.

Features

Standard across the X-Fit range.



Indoor.



Surge protection.



Sustainably Recyclable.



Acrylic Lens.



Serviceable: All units are serviceable and all parts replaceable.



Colour temperature 3000, 4000, 5600 & 6500K



Colour rendition index 80+



Top Bin Chips <3 MacAdams



Modular.



Earth connection and CLASS I insulation fixture.



P2000 trunking compatible



L&B Life Rating: L80 B10, 70 000 hrs

Extras

Optional Extras.



Casambi bluetooth technology.



All units can be fitted with Dali or bi-level driver.



Driver upgrade to 4kV



Up to 12kV replaceable surge protection.



IES files available.



8 lens options available on request
Retail symmetrical, Asymmetrical 1 & 2,
30°, 90°, 60°, 60° UGR, or 110°



VOLTpro

Designed and
Manufactured by

energywise

Better Light
Through Research.

sales@energywise.co.za | www.energywise.co.za

T: +27 31 764 2345 / +27 87 941 0012

Physical address: Unit 5 Edstan Business Park, 2 Ibhubesi Road, Riverhorse
Valley, Durban, South Africa, 4017

Postal address: PO Box 1166, Kloof, South Africa, 3640

Energywise lighting options

Energywise specialises in LED luminaries for industrial, EX, commercial and horticultural applications.

INDUSTRIAL

						
Bay XP Factories, Warehouses, Cold rooms etc.	Bay XL Factories, Warehouses, Supply rooms etc.	Bay XE Factories, Warehouses, Supply rooms etc.	DUSTPROOF Warehouses, Car parks, Corridors.	VANDAL-RESISTANT DUSTPROOF Car parks, Corridors, Mills.	PUREBox Panel Medical & laboratory, Clean rooms etc.	Torch Bulkhead Heavy industrial areas.
Standard Height: 6-25m IP: 65 Temp: 40/65°C	Standard Height: 3-20m IP: 40 Temp: 30°C	Standard Height: 6-25m IP: 20 Temp: 30°C	Standard Height: 2.5-8m IP: 66 Temp: 35°C	Standard Height: 2.5-8m IP: 66 Temp: 35°C	Standard Height: 3-5m IP: 54 Temp: 35°C	Standard Height: 6-25m IP: 65 Temp: 30°C


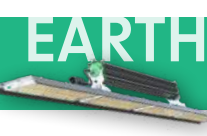


						
Pod IP65 Tamperproof and nearly unbreakable.	Bay XF Get the job done, Glare-Free.	Plate XP Swiss army knife of lighting.	TOBLO bay Factories, Warehouses, Supply rooms etc.	Bay XT Distribution centers, Warehouses etc.	Retrofit 44 Converting old HID tech to LED	Retrofit 22 Converting old HID bulkhead to LED
Standard Height: 2-5m IP: 65 Temp: 35°C	Standard Height: 2-10m IP: 20 Temp: 30°C	Standard Height: 6-25m IP: 65 Temp: 35°C	Standard Height: 6-25m IP: 40 Temp: 40/30°C	Standard Height: 3-20m IP: 40 Temp: 35°C	Standard IP: 00 Temp: 30°C	Standard IP: 00 Temp: 35°C

RETAIL & COMMERCIAL

						
LEDrail 1000 Shops, Production facilities, parking	LEDrail 2000 Shops, Sheds, Underground parking	LEDrail 4000 Retail, board rooms, department stores.	LEDrail 8000 Retail, board rooms, department stores.	LEDrail 4-100 All retail outlets, showrooms, offices etc	LEDrail 4LCO Shops, Production facilities, showrooms etc	Linear 4-300 Glare free precision lighting
Standard Height: 2.5-10m IP: 40 Temp: 30°C	Standard Height: 2.5-10m IP: 40 Temp: 30°C	Standard Height: 2.5-6m IP: 40 Temp: 35°C	Standard Height: 2.5-6m IP: 40 Temp: 35°C	Standard Height: 2.5-10m IP: 40 Temp: 35°C	Standard Height: 2.5-10m IP: 40 Temp: 35°C	Standard Height: 2.5-10m IP: 40 Temp: 35°C

						
Downlighter Offices, retail and hospitality settings.	Panel 595x595 Offices, healthcare, educational facilities.	Panel 1195x595 Offices, commercial, educational settings.	EX Bay XP Factories, Warehouses, Mills, Marine etc.	EX DUSTPROOF PREMIUM Warehouses, Car parks, Mills.	EX DUSTPROOF Warehouses, Car parks, Corridors, Mills.	EX Pod Factories, Mines, Marine etc.
Standard IP: 40 Temp: 30°C	Standard IP: 40 Temp: 30°C	Standard IP: 40 Temp: 30°C	Standard Height: 6-25m IP: 65 Temp: 40°C	Standard Height: 2.5-8m IP: 65 Temp: 35°C	Standard Height: 2.5-8m IP: 65 Temp: 35°C	Standard Height: 2-5m IP: 68 Temp: 40°C

EARTH

			
EX Torch Heavy industrial areas.	EARTHbay Horticulture, Open areas etc	EARTHplate Horticulture, Rack/ Under shelf etc	EARTHpod Horticulture, Propagation, Racks etc.
Standard IP: 65 Temp: 40°C	Standard From canopy: 0.5-2m IP: 65 Temp: 35°C	Standard From canopy: 0.4-2m IP: 65 Temp: 35°C	Standard From canopy: 0.2-1m IP: 65 Temp: 35°C

Lights on. Job done.

energywise

Better light
through research.