

# EX LO-BOX

EX

IP  
65



## Same trusted performance, Built for EX.

The EX LO-BOX carries forward everything you rely on—consistent output, durability, and efficiency, now reinforced for hazardous environments. Designed to meet EX requirements without compromising performance, it delivers dependable illumination in high-risk zones where safety is critical.



Proudly manufactured in  
South Africa using  
European LED Technology



kV Protection:  
4kV surge  
protection



L&B Rating:  
L80 B10  
90 000 hrs



Optic Impact  
Rating:  
IK08/5J.



5 Year  
Warranty

energywise

Better light  
through research.

# Built for EX Backed by XP

## Same trusted core. Reinforced for EX.

The EX LO-BOX is the evolution of trusted performance—engineered for hazardous environments where standard fittings fall short. Built on our high-efficiency Bay XP platform, it retains everything that made the original reliable: powerful lumen output, energy efficiency, and long-term dependability—now adapted for EX-rated applications.

Encased in a rugged housing fabricated from 3CR12 stainless steel, it's designed to withstand harsh conditions. From corrosive coastal air to demanding industrial environments, the EX LO-BOX resists wear while maintaining performance where it matters most.

At its core, the proven Bay XP LED and driver system remains, paired with an aluminium heat sink plate coated in durable epoxy for optimal thermal management and enhanced corrosion resistance.

When the environment is unforgiving, you need a luminaire that doesn't flinch.

\*25°C is for Textbooks, Not Africa's Sun:  
All EW Lights are designed for not less than 35°C Reality.

## KEY FEATURES

### MODULAR

- The fitting can reach a max lumen package of 12,330 effective lumen.

### LENSES

- 3 different optics for multiple lens combinations.

### 3 SIZE OPTIONS

- EX LO-BOX 101
- EX LO-BOX 201
- EX LO-BOX 301

### OPTICS

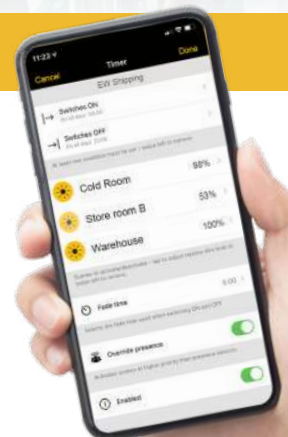
- Impact rating IK08/5J

### TEMPERATURE

- Ambient room temperature -25°C to +45°C. (Up to +65°C on request)

### MOUNTING OPTIONS

- Suspended, mounted directly on the ceiling or by using a bracket (Available as an add-on).



**Optional:**  
Bluetooth, Wifi,  
Dali 2 & Bi Level.  
Casambi App  
featured above.



# Specifications

## Spec'd for every situation.

Our EX LO-BOX Bay can be manufactured to your desired specifications, see the options below.



**kV Protection:**  
4kV surge  
protection



**5000K standard**  
3000K, 4000K,  
6500K available  
CR>80 R9>13



**Undercover**



**Recyclable**



**Lenses**



**Modular:**  
Expandable  
system



**L&B Rating:**  
L80 B10  
90 000 hrs

## EX LO-BOX 101

470 x 220mm

Raw Lumen:  
Effective Lumen:

5954 lm  
5033 lm

Wattage:  
Raw Efficacy:  
Effective Efficacy:

**31W**  
194 lm/w  
164 lm/w

Max Ta:  
L&B:  
Hrs:

**40°C**  
L80 B10  
90 000 hrs



## EX LO-BOX 201

470 x 345mm

Raw Lumen:  
Effective Lumen:

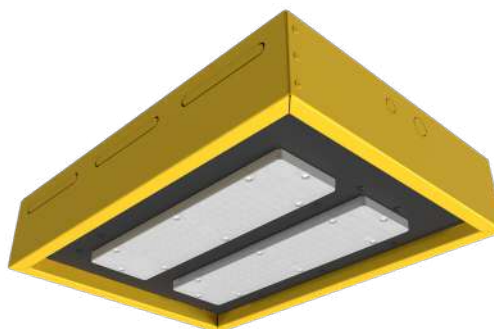
11 908 lm  
10 568 lm

Wattage:  
Raw Efficacy:  
Effective Efficacy:

**62W**  
194 lm/w  
172 lm/w

Max Ta:  
L&B:  
Hrs:

**50°C**  
L80 B10  
90 000 hrs



## EX LO-BOX 301

470 x 475mm

Raw Lumen:  
Effective Lumen:

19 845 lm  
18 303 lm

Wattage:  
Raw Efficacy:  
Effective Efficacy:

**102W**  
195 lm/w  
179 lm/w

Max Ta:  
L&B:  
Hrs:

**50°C**  
L80 B10  
90 000 hrs

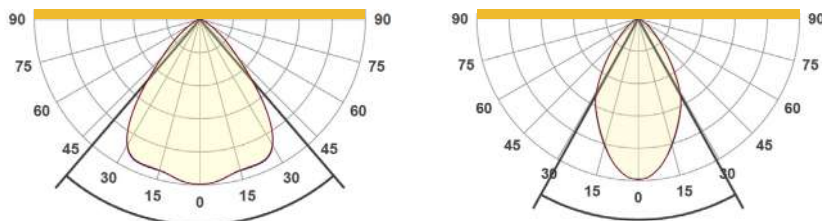


# Distribution Options

The light you need, where you want it.

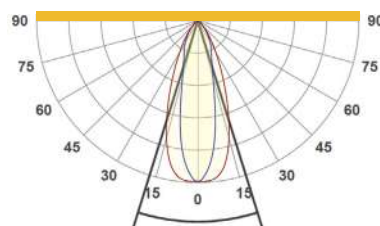
The development of high-quality optical lenses has changed the lighting game. Gone are the days of naked bulbs throwing out in a wide light spray covering everything from the ceiling above to the walls no one needs to see. With today's advancements in lens technology, we are able to put the light where you need it most providing you lux levels with near pin point accuracy without sacrificing efficiency.

In so doing we can provide solutions specific to your needs with our selection of lenses, meaning the only time you have dark spots is if you want them intentionally.



Wide 90°

Medium 60°



High Rack

## A Closer Look

Engineered to the highest standards.

### 3CR12 enclosure

The EX LO-BOX features a durable 3CR12 stainless steel outer body, offering excellent corrosion resistance in coastal and industrial environments. Design to protect internal components, cuts down on maintenance, and extends lifespan in tough conditions.

### Lenses

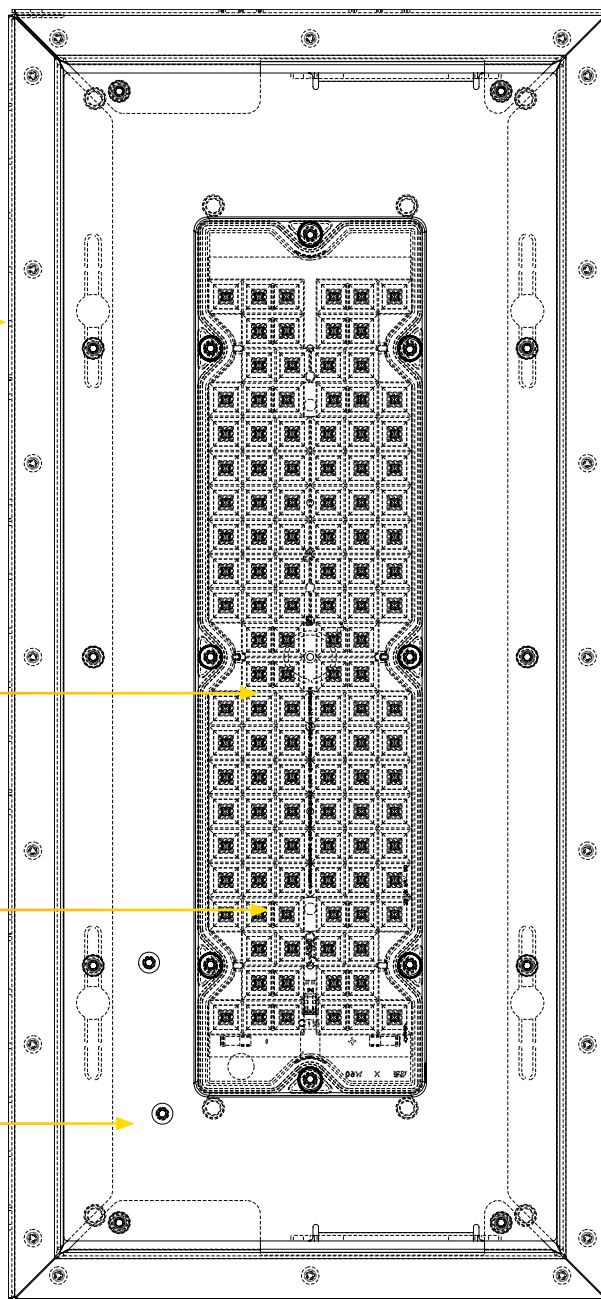
Polycarbonate lenses offer great IK08/5J impact protection and efficient distribution control. The continuous silicone gasket allows a water-resistant (IP65) assembly.

### LEDs

Source from the best component manufacturers in Europe to ensure maximum lifespan, quality and light spectrums.

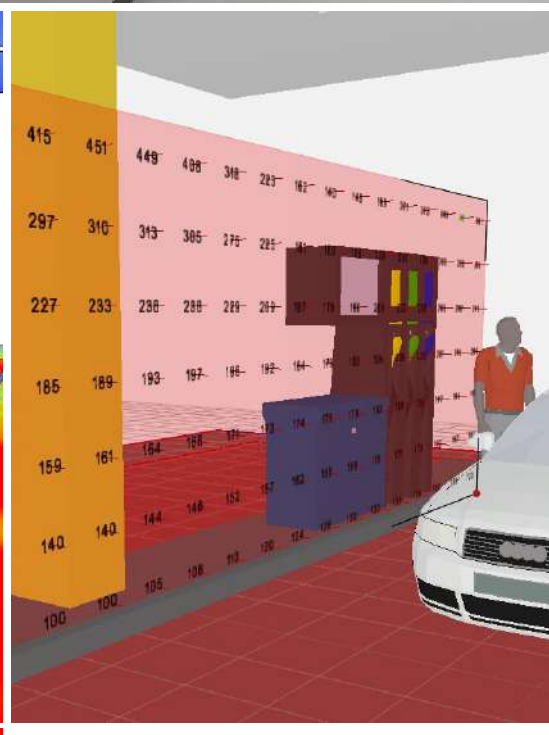
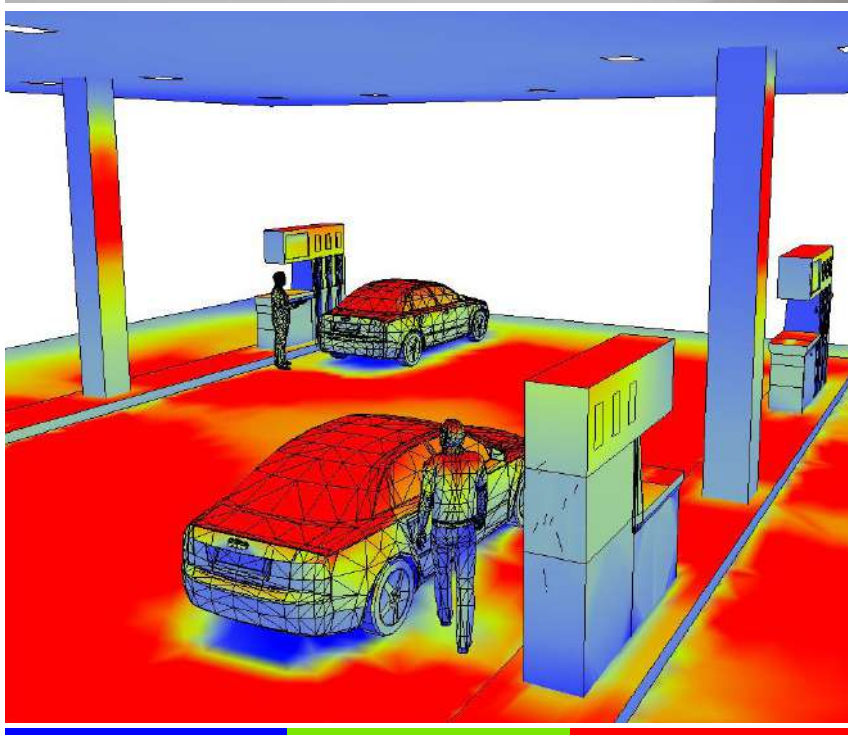
### Heat sink

Aluminium heat sink plate, coated in durable epoxy, ensures thermal efficiency while adding to the unit's corrosion resistance.



# Petrol Station Scene

Relux simulation of EX LO-BOX lighting a petrol station canopy



0

200

400

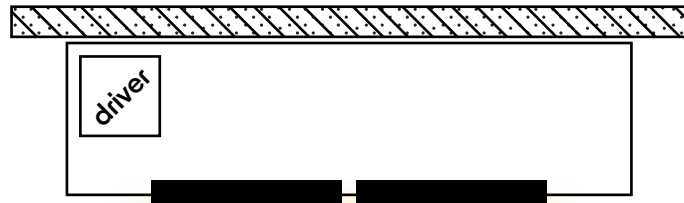
# Installation

## Easy to install, **Saving** you time & money

The EX LO-BOX is easy to install under canopy with a few different mounting options. Please specify your preference when ordering.

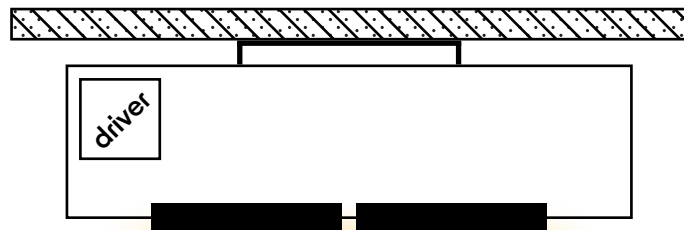
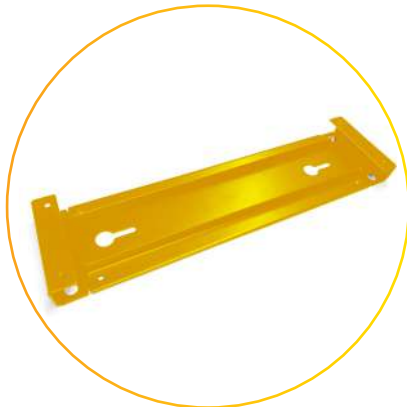
### Ceiling mount (standard)

A simple system to mount your new fittings directly to most ceiling.



### Mounting bracket

Available on request at an additional price.



#### Disclaimer:

While every effort is made to ensure the accuracy of technical details at the time of publication, we reserve the right to modify or upgrade any product or component specifications without prior notice. Our products undergo continuous improvements in technology, energy efficiency, safety, and cost-effectiveness to meet evolving industry standards and supplier updates.

All upgrades are made to enhance product quality, and as such, no claims or complaints will be entertained regarding specification changes.

We are ISO 9001:2015 compliant, and our assembly line adheres to IEC 60958 guidelines. Our products are covered by a Product Liability Policy, and our LED products come with a 5-year warranty (T&Cs apply—please contact Head Office for details).

#### Effective Lumen Output After Warm-up

We adhere to industry best practices in providing accurate Effective Performance Data (Lumens, Watts, and L&B) that account for driver and LED thermal losses during the warm-up period.

To ensure precise measurements, we conduct Energy and Photometric Testing only after the LED within the fitting has been powered on long enough to reach a stable and constant lumen output—achieving thermal equilibrium at an ambient temperature ( $T_a$ ) of 35°C.

Unfortunately, some suppliers misrepresent efficacy by inflating lumen values 10–20% above the true effective output. This is often done by using raw LED photometric data, which:

- Excludes driver losses (typically 2–5%)
- Ignores thermal adjustment losses, which can take 20–240 minutes and account for 7–15% reduction in output

Given these factors, the actual Effective Lumen Output is often lower than raw values suggest. In extreme cases, some suppliers report only raw LED values, completely disregarding real-world performance. For transparency and accuracy, we ensure our data reflects true effective lumens, providing reliable performance metrics you can trust.

# Features

## Standard across the EX LO-BOX range.



Undercover



Serviceable: All units are serviceable and all parts replaceable.



5000K Standard, 3000K, 4000K, 6500K on request.



Colour rendition index 80+



Top Bin Chips <3 MacAdams



Modular.



Earth connection and CLASS I insulation fixture.



Optic impact rating IK08/5J.



Voltage surge protection 4Kv.



All screws & mini shackles in stainless steel 316.



Lenses.



Sustainably Recyclable.



L&B Life Rating: L80 B10, 90 000 hrs



Excellent Luminous Efficacy (Lm/W)

# Extras

## Optional Extras.



Casambi bluetooth technology.



All units can be fitted with Dali or bi-level driver.



Replaceable 10kV surge protection modules available.



IES files available.



Motion Sensor.



VOLTpro



**5 year warranty:**

Please visit  
[www.energywise.co.za](http://www.energywise.co.za)

Designed and  
Manufactured by

**energywise**<sup>®</sup>

**Better Light  
Through Research.**

sales@energywise.co.za | [www.energywise.co.za](http://www.energywise.co.za) | T: +27 31 764 2345  
Physical address: Unit 5 Edstan Business Park, 2 Ibhubesi Road,  
Riverhorse Valley, Durban, South Africa, 4017  
Postal address: PO Box 1166, Kloof, South Africa, 3640

# Energywise lighting options

Energywise specialises in LED luminaries for industrial, EX, commercial and horticultural applications.

## INDUSTRIAL



**Bay XP**  
Factories, Warehouses,  
Cold rooms etc.

**Standard**  
Height: 6-25m  
IP: 65  
Temp: 40/65°C



**Bay XL**  
Factories, Warehouses,  
Supply rooms etc.

**Standard**  
Height: 3-20m  
IP: 40  
Temp: 30°C



**Bay XE**  
Factories, Warehouses,  
Supply rooms etc.

**Standard**  
Height: 6-25m  
IP: 20  
Temp: 30°C



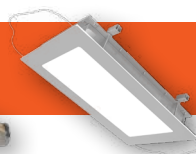
**DUSTPROOF**  
Warehouses, Car  
parks, Corridors.

**Standard**  
Height: 2.5-8m  
IP: 66  
Temp: 35°C



**VANDAL-RESISTANT  
DUSTPROOF** Car parks,  
Corridors, Mills.

**Standard**  
Height: 2.5-8m  
IP: 66  
Temp: 35°C



**PUREBox Panel**  
Medical & laboratory,  
Clean rooms etc.

**Standard**  
Height: 3-5m  
IP: 54  
Temp: 35°C



**Torch Bulkhead**  
Heavy industrial areas.

**Standard**  
Height:  
IP: 65  
Temp: 30°C



**Pod IP65**  
Tamperproof and  
nearly unbreakable.

**Standard**  
Height: 2-5m  
IP: 65  
Temp: 35°C



**Bay XF**  
Get the job done,  
Glare-Free.

**Standard**  
Height: 2-10m  
IP: 20  
Temp: 30°C



**Plate XP**  
Swiss army knife  
of lighting.

**Standard**  
Height: 6-25m  
IP: 65  
Temp: 35°C



**TOBLO bay**  
Factories, Warehouses,  
Supply rooms etc.

**Standard**  
Height: 6-25m  
IP: 40  
Temp: 40/30°C



**Bay XT**  
Distribution centers,  
Warehouses etc.

**Standard**  
Height: 3-20m  
IP: 40  
Temp: 35°C



**Retrofit 44**  
Converting old HID  
tech to LED

**Standard**  
IP: 00  
Temp: 30°C



**Retrofit 22**  
Converting old HID  
bulkhead to LED

**Standard**  
IP: 00  
Temp: 35°C

## RETAIL & COMMERCIAL



**LEDrail 1000**  
Shops, Production  
facilities, parking

**Standard**  
Height: 2.5-10m  
IP: 40  
Temp: 30°C



**LEDrail 2000**  
Shops, Sheds,  
Underground parking

**Standard**  
Height: 2.5-10m  
IP: 40  
Temp: 30°C



**LEDrail 4000**  
Retail, board rooms,  
department stores.

**Standard**  
Height: 2.5-6m  
IP: 40  
Temp: 35°C



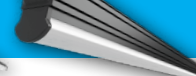
**LEDrail 8000**  
Retail, board rooms,  
department stores.

**Standard**  
Height: 2.5-6m  
IP: 40  
Temp: 35°C



**LEDrail 4-100**  
All retail outlets,  
showrooms, offices etc

**Standard**  
Height: 2.5-10m  
IP: 40  
Temp: 35°C



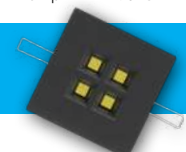
**LEDrail 4LCO**  
Shops, Production  
facilities, showrooms etc

**Standard**  
Height: 2.5-10m  
IP: 40  
Temp: 35°C



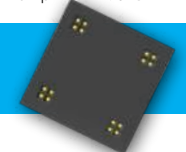
**Linear 4-300**  
Glare free  
precision lighting

**Standard**  
Height: 2.5-10m  
IP: 40  
Temp: 35°C



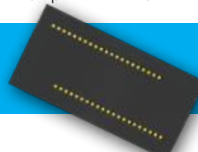
**Downlighter**  
Offices, retail and  
hospitality settings.

**Standard**  
IP: 40  
Temp: 30°C



**Panel 595x595**  
Offices, healthcare,  
educational facilities.

**Standard**  
IP: 40  
Temp: 30°C



**Panel 1195x595**  
Offices, commercial,  
educational settings.

**Standard**  
IP: 40  
Temp: 30°C



**EX Bay XP**  
Factories, Warehouses,  
Mills, Marine etc.

**Standard**  
Height: 6-25m  
IP: 65  
Temp: 40°C



**EX DUSTPROOF  
PREMIUM** Warehouses,  
Car parks, Mills.

**Standard**  
Height: 2.5-8m  
IP: 65  
Temp: 35°C



**EX DUSTPROOF**  
Warehouses, Car  
parks, Corridors, Mills.

**Standard**  
Height: 2.5-8m  
IP: 65  
Temp: 35°C



**EX Pod**  
Factories, Mines,  
Marine etc.

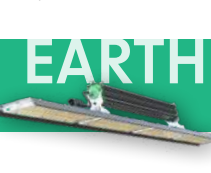
**Standard**  
Height: 2-5m  
IP: 68  
Temp: 40°C

## EARTH



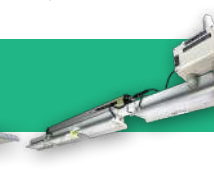
**EX Torch**  
Heavy industrial  
areas.

**Standard**  
IP: 65  
Temp: 40°C



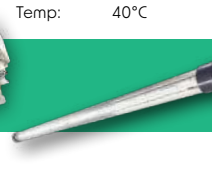
**EARTHbay**  
Horticulture, Open  
areas etc

**Standard**  
From canopy: 0.5-2m  
IP: 65  
Temp: 35°C



**EARTHplate**  
Horticulture, Rack/  
Under shelf etc

**Standard**  
From canopy: 0.4-2m  
IP: 65  
Temp: 35°C



**EARTHpod**  
Horticulture,  
Propagation, Racks etc.

**Standard**  
From canopy: 0.2-1m  
IP: 65  
Temp: 35°C

Lights on. Job done.

**energywise**

Better light  
through research.