

# EX LO-BOX

Available in:  
101, 201 and 301  
configurations

EX  
IP  
65

## Same trusted performance, Built for EX.

The EX LO-BOX carries forward everything you rely on—consistent output, durability, and efficiency, now reinforced for hazardous environments. Designed to meet EX requirements without compromising performance, it delivers dependable illumination in high-risk zones where safety is critical.



### SPEC SHEET

## EX LO-BOX

101

201

301

Raw Lumen: 5954 lm  
Effective Lumen: 5033 lm

11,908 lm  
10,568 lm

19,845 lm  
18,303 lm

**Wattage:** 31W  
Raw Efficacy: 194 lm/w  
Effective Efficacy: 164 lm/w

**62W**  
194 lm/w  
172 lm/w

**102W**  
195 lm/w  
179 lm/w

**Max Ta:** 40°C  
L&B: L80 B10  
90 000 Hrs

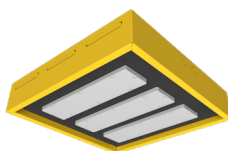
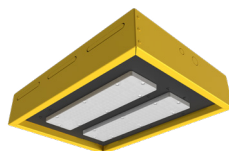
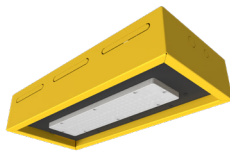
**50°C**  
L80 B10  
90 000 Hrs

**50°C**  
L80 B10  
90 000 Hrs

470mm x 220mm

470mm x 345mm

470mm x 475mm



### KEY FEATURES

Available in three different sizes, lumens/wattage/light distributions packages

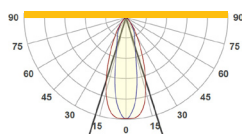
- Each option has been designed and tested to ensure reliable performance at ambient temperatures up to 40°C
- High residual lumen (L&B factor) over the lifecycle of the luminaire
- High quality LED & Driver - compliant to international safety standards/specifications
- Fitting can be suspended, mounted directly on the ceiling or by using a bracket (Available at an additional cost).

\*25°C is for Textbooks, Not Africa's Sun: All EW Lights are designed for not less than 35°C Reality.

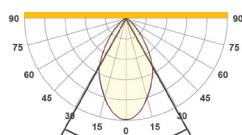


LED Options

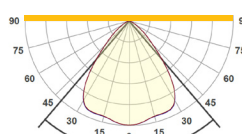
Distribution Options



High Rack



Medium 60°



Wide 90°



**KELVIN**  
5000K standard  
3000K, 4000K,  
6500K available  
CR>80 R9>13



**IP Rating:**  
Undercover



**Modular:**  
Expandable  
system



**Lenses**



**Construction & Fasteners:**  
Aluminum & SS316



**Optional:**  
Bluetooth, Wifi,  
Dali 2 & Bi Level



**4kV**  
**kV Protection:**  
4kV surge  
protection



**IK08/5J**  
**Impact Resistance:**  
IK08/5J



**L&B Rating:**  
L80 B10  
90 000 hrs

Designed and  
Manufactured by

**energywise**

Better Light  
Through Research

sales@energywise.co.za | www.energywise.co.za  
T: +27 31 764 2345 / +27 87 941 0012

Physical address:  
Unit 5 Edstan Business Park, 2 Ibhuesi Road,  
Riverhorse Valley, Durban, South Africa, 4017.  
Postal address: PO Box 1166, Kloof, South Africa, 3640

5 year warranty:  
Please visit [www.energywise.co.za](http://www.energywise.co.za)

MADE IN SOUTH AFRICA